

Sandycove and Glasthule Residents Association Newsletter

May 2021



ISSN 2565-6333



9 772565 633009

www.sagra.ie

THANK YOU FOR YOUR
CONTINUED SUPPORT
OVER THE PAST 18 YEARS



01- 2300 600 www.rasam.ie info@rasam.ie



Fitzgerald's
OF SANDYCOVE
DUBLIN IRELAND

SERVING THE LOCAL
COMMUNITY
FOR 60 YEARS

TOM, BETTY AND STAFF
LOOK FORWARD TO SERVING
YOU ALL AGAIN SOON

BRADY
&
McCARTHY

Estate Agents & Auctioneers



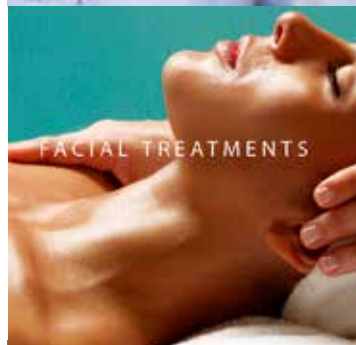
Selling or Letting your Property?
Call Darragh or Olwen today

(01) 5640032

www.brmc.ie

PSRA License 003850

Beauty at Eden



WELCOME BACK

Book Online: www.beautyateden.ie

01-2808880



Dear Resident

Welcome to this May edition of our newsletter. We very much hope you enjoy reading it. As we prepare this newsletter, we're acutely aware that many of our residents continue to live in surreal and challenging times.

As with our last newsletter, we have taken the decision not to ask our distributors to deliver the newsletters, given a natural desire to maintain safety protocols. Accordingly, we're making available the printed edition of the newsletter at Eamonn's Bookshop in Sandycove and at the Spar in Glashule. Our thanks go to these two local shops, for their continued support in making available copies of the newsletter to residents.

One of the great strengths of our village is the strong relationships that exist between the local businesses and our residents. The retail and hospitality sectors have suffered a torrid time during this pandemic. It is therefore more important than ever before to support our local businesses. For this reason, we have chosen again to offer free advertising to our regular advertisers. We would urge residents where possible to buy local to help these wonderful businesses survive.

Our area has witnessed incredible change in a short time period. The new coast road cycle path is popular with young families, leisure visitors and commuters alike and has brought more visitors to our beautiful area. The look and feel of the village have changed with investments in new planting and seating. The Committee completed a County Development Plan submission; this can be read at pages 6 to 9.

The funding for the Imogen Stuart Standing Stone Sculpture project was a great success, and work is advancing on carving the stone. The hope is that the sculpture will be unveiled in Otranto Park this summer. Work continues on the Dún Laoghaire Baths site, but we await the reopening date for the revised sea front scheme.

The Committee recognise and welcome many of the great changes carried out by Dún Laoghaire Rathdown County Council, but there is need to recognise that some of the changes have created consequential difficulties that should be addressed. We urge Council officials to work with residents and local representative organisations to refine / tweak their designs, to improve the outcomes for all.

We're again sadly cancelling our May meeting due to Covid19 and we plan to have our AGM in November. Our Facebook Group is now up to 2,200 members and traffic to our website continues to grow. Wishing you all the very best for the summer season.

John Conroy
Chairperson

Annual General Meeting

Our AGM has been postponed until **November 29th**. Keep an eye out for notices on our website, by email, our social media channels and the November newsletter for details closer to the time.

Subscriptions

This is usually the time of year we request payment of annual membership subscriptions.

We now have a secure online system for paying subscriptions. The system is run through myEasyPay based in Sandycove. There is a direct link on our website under membership.



The rates are unchanged: €15 for individual and €22 for household membership.

Advertising

If you are interested in advertising in our November 2021 edition please email **editor@sandycoveandglashule.ie** or phone Liam on **086 804 6938**.

This is a local magazine so we have a policy of only accepting advertising from those based locally.

Cover Photo

Thanks to Robert Burns, DLRCC for the image which features Imogen Stuart in front of her beloved Otranto Park.

Contact Us

Email: info@sandycoveandglashule.ie

**c/o Eamonn's Bookshop,
50 Sandycove Road,
Sandycove,
Co Dublin.**

SAGRA Committee

Chairperson: John Conroy

Secretary: Trevor King

Treasurer: Liam Madden

Other committee members (in alphabetical order):

Roger Courtney

James Howley

John Elliot

Giles Kerr

Kay Gleeson

Mary Roche

Unless expressly attributed, the views expressed in this newsletter are based on editorial decisions broadly reflective of the policies decided by the committee of the Association and should not necessarily be attributed to any individual committee member.

Annual General Meeting November 30th 2020

Liam Madden, Chairperson welcomed everyone to the virtual AGM postponed from May. He thanked our elected representatives present for taking the time to be involved: Jennifer Carroll-MacNeill TD, Cormac Devlin TD, Ossian Smyth TD, Richard Boyd Barrett TD who sent his apologies, Cllr Mary Fayne, Cllr Lorraine Hall, Cllr Melisa Halpin and Cllr Justin Moylan. He then introduced the other members of the SAGRA committee.

Chairperson's Address

One emphasis of the association is to encourage the community involvement by residents, and in this regard what has been a great help is our **Facebook group**. The group had 1730 members. It has proved a very useful method of sharing information and for receiving feedback. Liam advised that some interesting stories have come out of the Facebook group. He provided a personal story of the safe return of a lost dog.

Liam advised that back in May the decision was taken not to intrude on our distributors, so the **newsletter** was put online. The Committee later resolved to print a limited edition of the newsletter, and this was made available in Eamonn's Bookshop. In November Spar Glasthule kindly volunteered to stock the newsletter. The committee determined to offer free advertising to our local advertisers, in order to support them through this tough time.

Liam observed a theme running through the latest newsletter: the **democratic deficit**. This is where things are done in an area without the consent or consultation of the people affected. Liam stated that for some things this is mostly fine. Many people like the cycle path along the sea front, but there are people that this affects in an adverse way. Liam advised that he had had numerous "run ins" with Robert Burns from the Council on the Cowshed car park.

The Association had put in a sizable submission on the **County Development Plan**. This is reproduced in full in the newsletter.

Local businesses have been very badly hit over recent times and coming up to Christmas Liam asked if we can support them in any way that we can. Liam mentioned that a number of those businesses had advertised and supported us over time, therefore it was only right that we support them now.

Treasurer's Report

John Elliot advised that the financial year of the Association runs from May to April of the following year and therefore the Association had decided to show two sets of accounts.

For the year to 30 April 2020

Income: €8,145.08, Expenditure: €8,705.01, Deficit of €559.93.

Total Assets were €13,362.08

For six months to 31 October 2020

Income: €965.62, Expenditure: €1,236.91, Deficit of €271.29.

Total Assets were €13,090.79

John explained that there were some atypical features of last year. We received a generous unsolicited donation of €500 from a local resident. There are two unusual items of expenditure. One is the newsletter party held at the Royal Irish Yacht Club to celebrate 20 years of our newsletter. We felt that it was right to celebrate this momentous occasion and a way of the Association thanking our very loyal and helpful team of distributors. The other unusual item of expenditure is the contribution of €2,000 for the fundraising effort of the Imogen Stuart standing stone.

Election of Officers and Committee Members

John Conroy was elected as the new Chairperson, Trevor King as Secretary and Liam Madden as Treasurer. Roger Courtney, John Elliot, Kay Gleeson, James Howley, Giles Kerr, Mary Roche were reelected as committee members. Liam congratulated them all.

Open Forum

This is where we get an opportunity to raise issues with our local representatives.

ROAD SAFETY

Concerns had been raised about Hudson Road by the park, Lower Albert Rd and exiting the car park by Windsor Terrace. We were told that the Council are looking at a number of measures such as zebra crossings, signage and flashing speed lights. Several of the

public representatives have agreed to look into the issues.

ANTI-SOCIAL BEHAVIOUR

The issue of antisocial behaviour in Hudson Park and on the seafront was raised. One councillor stated that, according to the Gardaí, closing the park at night was not an option. It would not stop people getting in but would make it more difficult for the Gardaí to access the park when they needed to. It is hoped that things will calm down when things get back to normal when we all get vaccinated.

SANDYCOVE AVE (NORTH, EAST AND WEST)

The changes to the roads and the increased popularity in swimming has had a major impact on this area in terms of parking, access and crowds. A number of options were mentioned such as paid parking, local, service access only, opening up other swimming places. Councillors are aware of the issues. Robert Burns has been asked to engage with residents to see how this problem can be ironed out.

WATER QUALITY AND SWIMMING

One man recounted how he picked up an E. coli infection most likely from swimming in Seapoint. A piece of advice he picked up later from talking to lifeguards was not to go swimming for two days after heavy rain because of sewage overflows. We also found out that water is not tested during the winter and there are no lifeguards during the winter. Swimming in large numbers and all year is new. This should be catered for.

COWSHED CAR PARK

There was a long discussion on the Council's decision to change the layout of the car park in the centre of Glasthule against the wishes of the majority of traders and residents. The point was made that this is such a minor part of the bigger intervention and could threaten the success of the overall change. Councillors were urged to continue to try and persuade Robert Burns to concede on this small thing.

DEMOCRATIC DEFECIT

Reference was made to the Democratic Deficit article in the newsletter. For example the cycle lane was introduced under emergency measures. There was no vote on this by the Councillors. They were briefed on the changes but some of those briefings happened a matter of days before the work begun. There wasn't the usual public consultation,. The wider public didn't have a chance to have their say.

IMOGEN STUART SCULPTURE IN OTRANTO PARK

Imogen Stuart is thrilled with the success of the fundraising and progress on the sculpture. Ruairí Ó Dúlaing, DLRCC Senior Parks Superintendent, has agreed to facilitate the stone carving at their location in Cabinteely where sculptor Ciarán Byrne will start working on it in the new year. It will hopefully be ready in the summer when we will all be able to meet to see the lifting in of the three tonne sculpture.

COASTAL DEFENCES

There are detailed flooding studies about where most likely flooding will occur, whether it is from the sea or from the rivers, and those are being updated at the moment as part of the County Development Plan. There is a section of the Council that deals specifically with flooding / surface water. The feeling is that if these storms happen more frequently, we would be in a lot of trouble.

DUN LAOGHAIRE BATHS

August 3rd is Roger Casement anniversary. It is hoped to have the site opened before then and the statue to go in on his anniversary. However, the plan for the baths has had many changes and may do again, so we shall be kept updated.

RECYCLING BINS

There was a proposal that some local businesses could sponsor some recycling bins for Newtownsmith Green stating that there are far too few.

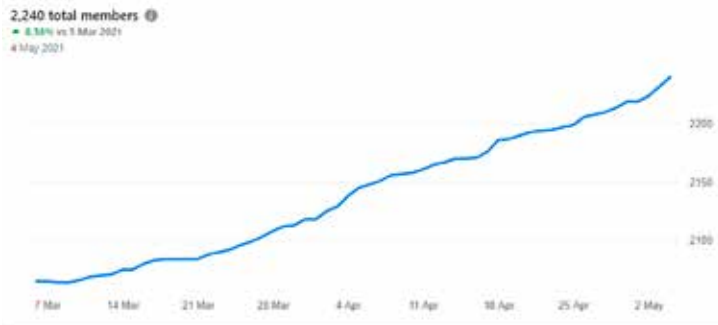
Conclusion

The Chairperson said how lucky we are to live in this area. The November issue of the newsletter is available in Spar and in Eamonn's Bookshop. Hopefully we will see each other in person soon.

SAGRA Facebook Group

<https://www.facebook.com/groups/sagra.ie/>

Our Facebook group now has over 2,200 members.
(See graph below.)



Some of the recent topics:

- Businesses in
- Businesses out
- Lost and found
- Service recommendations
- Vandalism
- Hedgehogs
- The Baths
- Parking enforcement
- Local photographs
- Rubbish
- Broadband

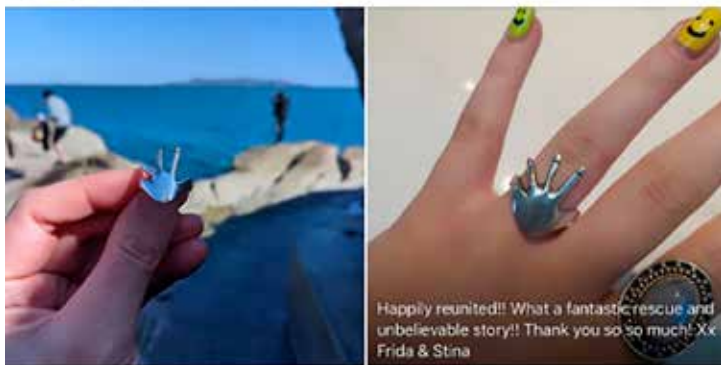
Thank you to all who have so far been contributing.

If you haven't done so already we would encourage you to join the group and get involved.

The web address is above or you can find a link on our website.

Please: keep it kind, keep it relevant, keep it local.

Harriet Donnelly shared a post.
19 April at 14:35 · 🌐



Flossie And The Beach Cleaners is at The 40ft.

19 April at 14:31 · Dún Laoghaire, Dublin · 🌐

GOOD NEWS STORY 🌈 one of the rings found in the sea has been claimed! It has been in the family for 30 years, and the mother gave it to her daughter 2 weeks ago,... See more

Ruthmoloney Art ▸ Sandycove and Glasthule Residents Association
- 26 April at 10:13 · 🌐

A local favourite "Cavistons"



Louise Colm Cash Rich
- 20 April at 14:13 · 🌐

The flags look good and brightens up things for the future.



Janie Lazar shared a post.
17 April at 14:03 · 🌐

Cannot help but keep wondering why our People's Park market continues not to open ..



Liam Madden shared a post.
- 11 April at 08:10 · 🌐



County Development Plan 2022-2028 - SAGRA Submission

The Sandycove and Glashule Residents Association is pleased to be given the opportunity to comment on the Dún Laoghaire Rathdown County Development Plan 2022 – 2028.

Our submission is in four sections specifically concerning:

1. Glashule Village Centre
2. Sandycove Architectural Conservation Area
3. Seafront and Coastal Defences
4. General Sandycove and Glashule Issues:

1. Glashule Village Centre

The village, which stretches from the DART station to Fitzgerald's pub and Harold School to Scotsman's Bay, has simultaneously a local, a citywide and an international character. Firstly, it is the vibrant centre of its neighbourhood with excellent local shopping, social and service facilities clustered together. At the same time, its combination of restaurants, pubs, shops and art gallery and proximity to the sea and Joyce's Tower combined with good transport accessibility and parking, make it attractive to visitors for socialising or seaside walks. On the 16th of June each year, it becomes a destination for Joycean enthusiasts and the day long Bloomsday street party is one of the cultural highlights of the year. This makes it a prominent element of the Dublin tourism experience.

Architecturally the village is a charming hotchpotch. Styles vary from the Victorian exuberance of 'The Eagle' public house to the distinctive early 20th c. brick gabling of the shops at the southern end. The delightful residential cul de sac 'The Glashule Buildings' and the original shopfronts of 'Glennon's' and 'Connollys' add variety also. There is one Protected Structure-the Victorian post box beside Mitchells. Though located on a busy crossroads, it is its vibrant and intimate scale which makes Glashule one of the more attractive villages in the Dublin region. Possibly the characteristic which contributes most to its popularity is its south facing pavement which allows the five very popular restaurant/wine bars to provide much sought-after outside tables. However, the paving surface of this stretch of the street has gone through various stages of improvement, repair, digging up, replacement and other interventions over the years. It now consists of at least four differing paving materials and is cracked or uneven in parts. Along this side, five trees of differing species have been planted while others have been removed. Planters and a seat have come and gone. Essential signage has increased. Solar bins have been provided. Signage on the businesses themselves has inevitably increased also and display stalls and advertising boards compete for attention and pavement space. Most prominent however, is the cluster of electricity boxes, a refuse bin, signage, lighting, and direction posts on the small area of footpath extension at the Link Road junction which present a very incoherent appearance.

These are all phenomena associated with the commercial success and attractiveness of the village, but over the years a sense of clutter and a neglect of the pavement surface has begun to appear and the review of the County Plan presents an opportunity to relook at the village and consider how its success and attractiveness can be preserved and enhanced. There is increasing competition on the southern side between space for infrastructure, signage, lighting, and planting. The challenge is how to free up and improve the pedestrian and sitting space while ensuring the provision of all ancillary and essential services. The appropriate vehicle for resolving these conflicts is a comprehensive Public Realm Study within which the stretch of public pavement between

Mitchells and the Link Road, which contains the principal location of restaurants/ wine bars, might be designated as an area for first stage improvements.

A Public Realm Strategy might consider the following initiatives:

- a) Relaying the pavement from Mitchells to the Link Road with stone slabs to create a unified effect.
- b) Reviewing public signage with a view to simplification and/or the provision of new signage relating to the history and facilities of the village.
- c) Examining infrastructure, in particular electricity boxes, with a view to their removal, relocation or visual improvement.
- d) Relocating public lighting onto building facades with the consent of the owners.
- e) Reviewing the condition, location and appropriateness of the existing trees and considering the provision of additional appropriate planting.
- f) Removing overhead wiring to achieve these objectives therefore the Draft Plan should contain an objective stating that: 'The Council will carry out and implement on a phased basis, a Public Realm Strategy for the village of Glashule'.

The excellent work the council carried out in Monkstown Village in recent years, offers a valuable precedent and possible solution to the needs of Glashule Village, together with the very successful, new temporary planting and seating introduced during the pandemic. While Glashule does not have the wide pavements and generous public open spaces found in Monkstown much could be done to redress the balance between pedestrians and motorists in our cross-roads village centre. When replacing the worn out road and pavement surfaces the council might consider a shared surface between Mitchells and the former Carluccios, with ramps up at these points on Glashule Road and similar ramps, perhaps ten meters back, from Glashule Road, when approaching down Adelaide Road or from Link Road. Permanent bollards, seating and planters could provide protection to pedestrians, while the ramped entry points to the shared surface will slow traffic at this busy junction and change the psychology of motorists who will feel they are crossing a pedestrian area, rather than pedestrians feeling they are encroaching on, or crossing a busy road. Within this zone of shared surface, we would encourage the council to retain parking only for deliveries and for people with disabilities. While the loss of parking will be a concern to traders, the more pedestrian friendly, outdoor seating and planting will hopefully compensate by them by a significantly increased footfall with shoppers arriving on foot, or by scooters or bicycles. To encourage the latter form of transport, your excellent recent policy of installing new cycle racks might be extended into former car parking spaces on Link Road and Adelaide Road.

2. Sandycove Architectural Conservation Area

The Sandycove Architectural Conservation Area (ACA) is a zone defined around Sandycove Point and has many historic, architectural, and cultural associations. It includes Otranto Park, Sandycove Harbour, the Forty Foot bathing area and The James Joyce Tower. The area attracts tens of thousands of visitors annually. It is an intensely used recreational amenity area for swimming, diving, walking, and canoeing. It also provides the setting for many annual events e.g. Bloomsday. This popularity however has a downside and we have concerns that the historic character and natural beauty of this very special place may be threatened. If we really value the wonderful ACAs that we are fortunate to have in this county, we should look after them better and continue to try to improve them. With that in mind we would like to make the following comments and suggestions:

Car parking

Parking continues to be a serious problem in SACA both for residents and for visitors. With the increased popularity of sea swimming, this has become even more of a problem. There are health and safety issues especially with regards to access for emergency vehicles. We urge the council to consider this especially in the light of the new bicycle lanes in the area introduced during COVID-19 time.

Overhead wires

The unsightly visual clutter of the overhead electricity and telecom wires are a visual blight to the entire seafront. These detract from the beauty of the area and are captured in thousands of holiday photographs. We would like to see these put underground. Street Lighting The council has implemented many excellent new public lighting schemes in recent years and SAGRA would urge it to prioritise the upgrading of lighting around the harbour and Otranto Park.

Public Toilets

The area attracts thousands of visitors all year round. There

is one public toilet in Sandycove near the beach and the next nearest is in the People's Park 1.3km away. This situation needs to be addressed urgently. Perhaps a discretely placed "pissoir" would help.

Lower Sea Walk

There is a walkway which runs along the seafront below the level of the main pathway. It goes from Sandycove beach to the baths in Dún Laoghaire and is a hidden gem. Unfortunately this quiet, attractive, seaside route is interrupted at a point close to the end of Burdett Avenue, where the concrete retaining wall that supports the pavement above, projects in the form of a bastion to the outer edge of the lower walkway, effectively interrupting the circulation. Consistent with the council's current objective to increase infrastructure for both pedestrians and cyclists, a relatively modest amount of structural work could be implemented to reconnect these two attractive shoreline walkways. When reconnected they will allow a pedestrian to walk from the former Sandycove Baths and Otranto Park, to the yellow coastal path in Sandycove Green, through the site of the restored Sandycove Baths to the low level gardens leading up to the east pier and then out to the end of the east pier. This would offer an entirely car free walk of just under 3km. Currently it is not well maintained and is not continuous. We suggest that it is re-established as a safe coastal walk. Additionally, to ensure optimum usage regard needs to be had to coastal flooding and personal security e.g. the installation of sympathetic security lighting/cctv.

Signage

Signage in SACA is a hotchpotch of styles, sizes, and utility. A number are redundant. As with the overhead cables these take away from the beauty of the area. We suggest that the style of signage in the area is standardised to fit in with the character of an ACA.

3. Seafront and Coastal Defences

In our submission to the preparation of the new County Development Plan, the Sandycove and Glashule Residents Association raised a number of issues and recommendations associated with rising sea levels, including flooding and coastal erosion. These were:

a) *The County Development Plan should include a high priority focus on the risk of flooding in low-lying coastal areas of the Irish Sea in and near Dublin Bay due to inevitably rising sea levels caused by climate change generally, including global warming. Over time the average sea level will rise to a material extent making this a distinctive issue over and above normal flood risks and the risk of underestimating the extent of the potential impact needs to be guarded against.*

b) *The coastal defence situation is absolutely vital and will become even more so in the future. The Council should commit to having a separate ring-fenced fund for coastal protection and drainage upgrades to prevent sea surges causing flooding.*

c) *The Council should draw on all available expertise and assistance from the Office of Public Works in addressing issues arising from the risk of flooding in low-lying coastal areas in and near Dublin Bay due to rising sea levels.*

d) *The Council should, to the extent not yet fully done, identify locations or areas in and near Dublin Bay that are particularly under threat due to rising sea levels, based on*

detailed projections of climate change impacts, and issue an updated list of such locations or areas and updated and verified maps of projected future flood risks as part of a new Strategic Flood Risk Assessment.

e) *The Council should prepare and review and update stormwater management plans and Sustainable Drainage Systems (SuDS) policies in low-lying coastal areas in and near Dublin Bay, in the context of rising sea levels.*

f) *The Sandycove and Glashule Residents Association has a particular interest in the coastline from Dún Laoghaire Baths south to Bullock Harbour, some of which has recently experienced flooding. The Council should continue building coastal protection works and flood relief works already in progress or planned and prepare plans to build necessary additional coastal defences and implement other shoreline flood management measures, in low-lying coastal areas in and near Dublin Bay, against rising sea levels commensurate with the scale of the risk faced.*

g) *The Council should seek expert specialist advice on the science of rising sea levels to become as well informed as possible about cost-efficient ways to protect low-lying coastal areas.*

h) *In conjunction with central government and neighbouring local authorities, investigations should be commenced into whether the building of a storm surge barrage in or near Dublin Bay, which can be closed during storms to prevent flooding, is a viable and beneficial option.*

3. Seafront and Coastal Defences continued

For this consultation, we have further commented on our issues and recommendations in light of the Council's response.

a. High priority to sea defences: With regard to our request that sea defences should be a high priority focus, the Council responded that this will be considered as part of the review and updating of the Strategic Flood Risk Assessment as part of the preparation of the Draft Plan. We were told that the Council currently works proactively with the OPW on flood relief works and drawing down of funding for works and studies and that climate change and resultant rising sea levels will inform the SFRA.

There is in fact very little consideration in the SFRA of risk of flooding in low-lying coastal areas of the Irish Sea in and near Dublin Bay due to rising sea levels caused by climate change. There is passing reference to coastal flooding associated with storm surge events from the Irish Sea. There is acknowledgment of climate change in section 4.8, but this appears to be either primarily or even solely within the context of accounting for climate change within new development proposals rather than in the context of a fundamental appraisal of the risk of flooding due to climate change for existing development. We are not convinced that the risk of flooding due to climate change has been acknowledged nearly sufficiently. Section 5.2.10 addresses coastal flooding, but this section is very general and not particularly reassuring.

The Council's response that they "currently work proactively with the OPW on flood relief works" is welcome to a degree, but highlights the risk of lack of clarity as to where responsibility lies between the Council, the OPW and Iarnród Éireann (which has significant responsibilities in this area due to the coastal railway line).

A Consultative Forum should be established consisting of local elected representatives, directly responsible Council officials, and nominees from the Glashule traders and from the Sandycove and Glashule Residents Association.

b. Ring fencing of funds: With regard to our highlighting the need for a separate ring-fenced fund for coastal protection and drainage upgrades, the Council gave no response. We note that the Council responded that the Council currently work proactively with the OPW on drawing down of funding for works and studies. We believe that the Council should be much more specific about what precisely it is doing regarding drawing down of funding for works and studies.

c. OPW expertise: We note that the Council responded that the Council currently work proactively with the OPW on flood relief works. We believe that the Council should be much more specific about what precisely it is doing regarding working proactively with the OPW on flood relief works.

d. Areas of high risk of flooding: In response to our previous submission raising localised flooding issues in Sandycove/Glashule, the Council responded that this will be considered as part of the review and updating of the Strategic Flood Risk Assessment as part of the preparation of the Draft Plan. We can find no reference in the SFRA to the specific issues concerning the Sandycove and Glashule Residents Association in relation to the coastline from Dún Laoghaire Baths south to Bullock Harbour, apart from some passing references to Bullock Harbour. We can find no material progress in SFRA on the other more general issues

we have identified, namely (1) identifying locations or areas in and near Dublin Bay that are particularly under threat due to rising sea levels, based on detailed projections of climate change impacts, and issuing an updated list of such locations or areas and updated and verified maps of projected future flood risks as part of the SFRA, with a very major focus on the coastline, progressing significantly the SFRA which still makes relatively slight reference to coastal issues and (2) making an assessment about whether the existing planning for a sea level rise is any longer sufficient.

e. Sustainable Drainage Systems (SuDS): Our previous submission on preparing and reviewing and updating storm water management plans and Sustainable Drainage Systems (SuDS) policies was not responded to. We request that the Council respond on this aspect.

f. Flooding in Sandycove/Glashule: In response to our previous submission raising localised flooding issues in Sandycove/Glashule, the Council responded that this will be considered as part of the review and updating of the Strategic Flood Risk Assessment as part of the preparation of the Draft Plan. There is minimal reference to such issues. As mentioned in our previous submission, prior to the Council closing in the 'natural flood run off', none of the properties ever flooded. Uniquely, the 'natural flood run off' protected the houses from flood water coming from both directions – sea and drains. This solution, based on local knowledge, is particularly brought to the attention of the Council. Assessment to the specific issues concerning the Sandycove and Glashule Residents Association in relation to the coastline from Dún Laoghaire Baths south to Bullock Harbour, apart from some passing references to Bullock Harbour. Recent storm surges and overtopping on Marine Parade and the bottom of Marine Avenue require a medium to long-term response. The Council's response so far has not answered our concern. Consideration needs to be given to the installation of a retractable steel barrier (or similar) to protect areas vulnerable to coastal flooding; this type of barrier would avoid a "Clontarf situation" where the concrete barrier was objected to and had to be reconfigured. Our previous submission on continuing building coastal protection works and flood relief works already in progress or planned and preparing plans to build necessary additional coastal defences and implement other shoreline flood management measures was not responded to. We request that the Council respond on this aspect.

g. Expert specialist advice: Our recommendation on seeking expert specialist advice on the science of rising sea levels to become as well informed as possible about cost-efficient ways to protect low-lying coastal areas was not responded to. We request that the Council respond on this aspect.

h. Storm surge barrage: In response to our recommendation regarding the construction of a storm surge barrage, the Council responded that any investigation of such a storm barrage would be National and Regional project and as such would not be something that a County Development Plan could instigate and so this is not a County Development Plan issue. While this is understood, we would welcome the County Development Plan at least referring to the possibility of County Development Plan objectives being assisted by this issue being considered as a National and Regional project.

4. General Sandycove and Glasthule Issues

Road surfaces

Many of the roads and pavement are very much in disrepair. Sandycove and Glasthule village would benefit from a similar scheme to what was delivered for Monkstown Village. The existing Council's pothole repairs strategy of perpetuating ongoing six-monthly emergency repair (tarmac in the hole) as against permanent repairs is not cost effective. Repairs should be coordinated - the Council should plan what is running under the roads to make sure that they are not digging it up as soon as tarmac goes down e.g., make sure broadband fibre is in place. A full plan for roads and pavements is needed. If the Council are repairing both pavements and roads at the same time, trunking ducts should be under the pavements and not the roads. Future cables can then be run through the trunking duct, mitigating against digging up the roads. In the long run, funds will be saved.

Litter

Management of litter is a very important local government service. In particular, the provision of litter bins in public areas is an essential public service. Both for obvious aesthetic reasons and also for reasons of public health it is vital that there should be adequate quantity of provision of litter bins in public areas with high footfall and adequate frequency of collection of litter from those litter bins.

If bins are overflowing because the overall provision of bins has insufficient capacity or they are infrequently emptied, an unsightly and unhealthy problem is inevitable. Moreover, the sight of overflowing bins is unpleasant and severely detracts from the attractiveness of public areas and will tend to encourage casual dropping of litter.

We note with concern that there is hardly any mention of litter in the draft County Development Plan. Objective 10.3.2.2 makes no reference to litter at all and objective 4.4.1.3 makes only passing reference to litter bins.

The draft County Development Plan should be amended to significantly raise the profile of adequate quantity of provision of litter bins in public areas with high footfall and adequate frequency of collection of litter from those litter bins and require that the achievement of these objectives be reviewed frequently. Additionally, in areas of high usage there is an urgent need to replace the manually operated solar bins with foot/pressure operated bins which are much more hygienic, with particular reference to COVID-19.

Hudson Park

The new park on Hudson Road is a great additional amenity to the surround community. The park's usage and the benefit of the park to the surrounding area could be substantially enhanced by the creation of an enclosed community garden in which local groups could plant raised beds to grow vegetables or flowers and to enjoy peace and tranquillity while others would simply come there to sit, chat and relax.

Broadband

Broadband is one of the key drivers in maintaining competitiveness and supporting socio-economic development. Good reliable broadband is needed to ensure that citizens across Ireland can avail of remote working, education, and other essential online facilities.

The COVID-19 pandemic has increased the pressures on families and business with poor internet connectivity and many families and businesses in this Country have been left struggling with poor connectivity.

We urge the Council to form a technical working group to be charged with assessing Broadband connectivity speed in the County with a view to developing a Broadband Digital Strategy Implementation Plan for the Country. This body should then engage with, the telecommunication companies that own the telecommunications infrastructure, to help them develop a County rollout map to upgrade the telecommunication lines to bring them to an acceptable 'upload and download' minimum standard.

There is a clear need for the Council to invest in a communications strategy, to lobby government and the wider public, to change the false narrative propagated that it is only rural areas suffering poor connectivity. Dún Laoghaire–Rathdown County citizens deserve equal access and opportunities, and unfortunately the County broadband infrastructure is so poor for many citizen and businesses, that it is causing a significant competitive disadvantage. It can't be right that families and businesses in this County are still struggling with internet broadband speeds of 2 to 5 Megabits per second, and it is incumbent on our County officials to call out, the miscommunications and inaccuracies published on

www.fibrerollout.ie.

We feel that it is time that County officials highlight that the Broadband connectivity in this urban area needs significant investment in order for the Dún Laoghaire–Rathdown County broadband infrastructure connectivity to improve and catch up with the national average.

Traffic management solutions

The popularity of Sandycove and Glasthule has grown over the last twenty years attracting thousands of visitors. This has resulted in a major conflict between the provision of a safe, healthy, and pleasant environment for residents (and visitors) and catering for the thousands of vehicles which attempt to access the area and park here. The problem will only increase unless coordinated measures are taken by Dún Laoghaire Rathdown County Council.

It should be a Specific Objective of the Development Plan that an effective Traffic Management Scheme (including parking) for the area should be prepared by the Council in consultation with the local residents as a matter of urgency.

We look forward to the outcome of this process. For more information on the County Development Plan and to see the other submissions (there are 1258 published responses) look at

<https://www.dlrcoco.ie/en/county-development-plan/draft-county-development-plan-2022-2028>

Noel Kavanagh Retires

Saturday May 1st was the last day of trading for Noel Kavanagh Quality Meats. For a number of reasons, including ill health, Noel has decided to hang up his butcher's apron and sell the premises.

Noel is originally from White's Villas in Dalkey. He started as a butcher at the age of 15 with Michael Keogh in Dalkey moving on to work with Roches Stores and Feargal Quinn before taking over Tom Clarke butchers at the current premises in Glashule in 1995.

Noel has been a supporter of our association and a regular advertiser with us since the first SAGRA newsletter featured ads.

Also leaving will be Ken Hogan who has been with Noel since 1995 and Pat Whelehan who joined him 8 years ago from across the road when Peter Dunne retired.

Noel plans to stay in the area and spend more time fishing and playing golf. We wish him well in his retirement.



Noel Kavanagh pulling down the shutters for the last time.

Hidden Gem

As mentioned in our County Development Plan submission (see page 7) it would be great to see the lower sea walk developed. It's a very pleasant walk away from the traffic.

The "sudden Large Waves due to the Arrival of the Car Ferry" as pictured right are no longer an issue but it can get quite slippery. It's not well maintained and there is a break (see the picture below).

We have discussed this before with the Council but maybe with the emphasis on social distancing and the amount of money being spent on infrastructure this might get more traction and we could end up with another amenity in the area.



The now redundant sign warning of the danger of waves from the ferry



Lower Sea walk near Otranto Park



A blockage on the walk

Question

What is the local significance of 2-2-22? See p17.

Liam Madden – 10 years as Editor

This issue of the Sandycove and Glasthule Residents Association Newsletter marks the tenth anniversary of Liam Madden becoming the Editor. May 2011 was his first edition and this is his 22nd edition.

It is safe to say that the Association's twice-yearly newsletter is truly the flagship activity of the Association and being the Editor is one of the most important posts in the Association. The newsletter aims to report on the work of the Association, issues of local concern, news of inspiring local people and community activities and lots of useful information – all features that have gone from strength to strength during Liam's tenure.

Liam taking over as Editor inaugurated a makeover in style with a fresh new appearance, which he has continued to evolve over the years. Virtually every residents' open meeting over the years has voiced spontaneous praise for Liam's work as Editor.

Advertisements first appeared in November 2012 and Liam has been pivotal ever since in liaising with our ever loyal and supportive advertisers.

November 2012 was also the beginning of the full page pictorial front cover and since then Liam has taken great care to choose excellent photographs which truly reflect the beautiful area where we live.

In 2015 there was a special extra edition in September to celebrate the 40th anniversary of the Association. Liam produced 12 pages then, up from the usual 8 pages and he never looked back, going to 16 pages in 2017 and a regular 20 pages since last year. The first 20 page edition was in fact appropriately enough in 2019 to mark the 20th anniversary of the newsletter, which included for the first time specially commissioned aerial photographs of our locality taken by drone.

2019 also saw a watershed in the maturing of the newsletter when it obtained an International Standard Serial Number (ISSN) which is an 8-digit code used to identify newspapers, magazines and periodicals of all kinds and in Ireland is administered by the Irish ISSN Centre at the National Library of Ireland.

We extend our sincere appreciation to Liam for his constant skill and dedication as Editor and hope he continues to enjoy his role for many years to come.



Sandycove and Glasthule Residents Association Newsletter
May 2011 info@sandycoveandglasthule.ie Circulation 2,500

Sandycove and Glasthule Residents Association is thriving and active and exists to promote the best interests of the residents of the area. We regularly publish this newsletter, which is distributed to 2,500 households. Members' subscriptions pay for the cost of printing this newsletter.

If you are a member, thank you. If you are not already a member, please consider joining.
You can use enclosed application form or one can be downloaded at www.sandycoveandglasthule.ie.

Proposed Development of Baths

- Retention and refurbishment of existing Baths Pavilion to provide access to swimming/paddling pool for children
- New structure at rear of existing Pavilion to accommodate café and restaurant, as well as toilets, changing facilities and lockers on ground floor
- New structure to accommodate Thalassotherapy and related activities
- DART to be covered in to provide new forecourt to Peoples Park – with new railings and entrance gates.

Total €17,897,715 - €20,313,907 (ind. VAT)
For further information see www.droco.ie.

ANNUAL GENERAL MEETING
Date: Monday 23rd May 2011
Time: 8 pm
Venue: St Joseph's Pastoral Centre
St Joseph's modern community hall is located to the left of St Joseph's Church, Glasthule, entrance through the main church gates.
No admission charge for this meeting.
As well as the usual formal business of the AGM this will be an opportunity for residents to hear about the latest developments in the area, to ask questions and to express their opinions.
There will be a talk given by An Garda.
ALL MEMBERS AND PROSPECTIVE MEMBERS FROM SANDYCOVE AND GLASTHULE ARE WELCOME

www.sandycoveandglasthule.ie Page 1

mirrella
Gift & Lifestyle
68 Glasheen Road, Glashule, Co. Dublin
01 220 4755
maddenliam@gmail.com

ODELLS BISTRO
NEW WINTER MENU €21
FROM 6PM TUES - SUN
2842168
48 SANDYCOVE RD 1 ABOVE THE WHISK BUFFY
WWW.ODELLSBISTRO.COM

Tom Higgins
ESTATE AGENT
No. 10 Sandycove Lane
URGENTLY REQUIRED FOR SALE AND TO LET IN YOUR AREA
Contact on 01 284 5007
BEFORE YOU MOVE TALK TO TOM

the wine buff
Thanks from Mike and Elaine to all our customers for your support over the last 5 years!
10% off next purchase with this advert

PEGGY'S BAKERY
Breads Cakes Pastries
GLASTHULE
01 280 2571
Orders taken for Christmas Cakes, Plum Puddings and Mince Pies

FITZGERALDS
Lunch 12.30 - 3.30
Monday to Friday
Brunch 11.30 - 5pm
Saturday & Sunday
(01) 280 4462
www.fitzgeraldsandsycove.com

64
BEST WISHES AND THANK YOU TO THE RESIDENTS ASSOCIATION FROM 64

Layout, photography & design: Liam Madden, ElmSoft, www.elmsoft.ie

Sandycove and Glasthule Residents Association Newsletter
May 2019 Circulation 2,500
20th Anniversary Edition

Annual General Meeting
Monday 27th May 8pm
St Joseph's Pastoral Centre
ALL WELCOME

www.sagra.ie

Businesses New to the Area

Welcome to Daata and to Sandycove Store & Yard

This is the 3rd **Daata**, the first opened by Rahat's sister and brother in law, in Bray in 1990. Waseem and Rahat opened Daata Greystones in 2017 and it currently is Just Eat's Best Vegetarian take away, but offers a full menu of traditional Pakistani and Indian food. Rahat (pictured) heads up the kitchen and trains all chefs to maintain the high standards Daata have come to be known for.

Daata Glathule opening is a very exciting time for the family. For now it will serve take out – collection and delivery - and when possible lunch and dinner, with a full bar, cocktail and wine menu.



Daata Glathule with head chef Rahat Saeed

The Sandycove Store and Yard is where Buckley's Auction rooms used to be. It's hard to define this place. It has a cafe, gelato truck, picture framing, art, interiors, furniture, lighting, flowers... It's dog friendly. It's also popular with early swimmers.

While we have new business in the area, we also say goodbye to businesses. Recently gone are Juggy's Well, Carluccio's, Cookbook Cafe, All Alfresco, Noel Kavanagh's, Buckley's Auction Rooms.

It's interesting to note that most vacated premises in the area don't stay empty for long.



Sandycove Store & Yard

Glasthule, Food Destination

Glasthule is heading towards being a real destination for eating out in Dublin. For 18 years we've been lucky to have the renowned Rasam in the village as well as Daniel's for 32 years. Daata is opening soon (see above) and later in the year we'll have the reopening of the Eagle House as a gastropub and Cavistons restaurant on the site of Bistro Vino.

The Eagle House is being renovated at a cost of about €1m. The plan is that building work will start in the summer and the venue will open later in the year. It will be a family inclusive gastropub with an emphasis on high quality food.

Mark Caviston of Cavistons says: "We'll be looking forward to welcoming diners back to the restaurant later this year with the freshest seafood cooked simply in our new premises a few doors up from the shop. We're delighted to see the Glasthule eating scene develop further over the coming months and are so excited to get serving again soon."

According to Nisheeth Tak from Rasam: "To have been part of the blossoming Glasthule village for more than 18 years has been a joy and we are waiting with enthusiasm for all the old and new establishments opening soon, adding to the special atmosphere and sense of community this area has always offered."

For more casual dining we mustn't forget to mention Camile and Kingsland Chef.

Slightly away from the centre of the village centre we have Odells, Fish Shack, Toscana and Fallon & Byrne.

We're looking forward to tasting what all these places have to offer.



IMOGEN'S STANDING STONE – PROJECT UPDATE

Leading up to Christmas and before the start of the current lock down, a small group of residents, together with Imogen and some of her family, enjoyed a very special hour in Otranto Park, where we gathered to view the full scale mock-up of Imogen's Standing Stone on top of the hill, where we are hoping the stone version will be standing before too long.



The purpose of the mock-up was two fold, one to assist the stone cutters from Ryan Stone in cutting the quarried block into its complex, tapering and curving form; and two, after they had finished with it, to use the mock up to see how the sculpture will look when placed in the park. Having brought the plywood mock up to the park it was set up and assessed in several locations and from different angles, so that Imogen could decide where it would stand and which sides of the sculpture should look out to sea, and which side should face landwards.



We all enjoyed, socially-distanced, mulled wine and delicious, home-made mince pies, in an atmosphere that was jovial and filled with excitement, as we all tried hard not to distract Imogen from her difficult task of determining where exactly her stone should stand. Having made her decision, Imogen was then able to join the rest of us in our seasonal refreshments, her task completed. It was a very memorable occasion for her, and indeed the rest of us, to see the beautiful form she has designed standing in its final location and everyone present, plus many passers by, were greatly

impressed by the strong presence that even a timber mock-up could bring to the place. As dusk settled there were some very atmospheric views, all carefully recorded by Liam Madden with his camera.

Since then, Imogen has been carving the heads of King Laoghaire and St Patrick into thick slabs of expanded foam roof insulation, to help the carver Ciaran Byrne understand her intentions and the exact depth of undercutting that is required. Ciaran, who in addition to being a fine carver and sculptor in his own right, is also a teacher in Newpark Comprehensive School, should soon be in a position to give the carving his full attention after the summer term ends. Until he is able to make a serious start on the carving he will not be able to estimate how long it will take to complete, but he is hoping it will be ready before the end of the summer.

The structural engineer will shortly be returning to site to oversee some excavation work to determine how high the rock is beneath the grass, as she will have to design a suitable foundation to support the stone and to ensure it is stable. Once lifted into place the stone will be dowelled and grouted to ensure stability. A fairly large crane will be required and the spectacle will no doubt attract much attention and make Sandycove Point, even more congested than usual.



When you think about how our forefathers erected standing stones, dolmens and high crosses hundreds, or even thousands of years ago, you can only marvel at their ingenuity and resourcefulness. We will all be looking forward with great interest, to see Imogen's twenty-first-century monument arrive in Sandycove, hopefully before the summer ends, but after the current restrictions on movement and gathering have passed.

JH



Thank you for your custom
from all of us

Under the Tree at



Glasthule

QUINNS

of Glasthule
Funeral Home

**Let us take care of you
and your family's needs**

CALL US 24 HOURS A DAY!

(01) 2806756

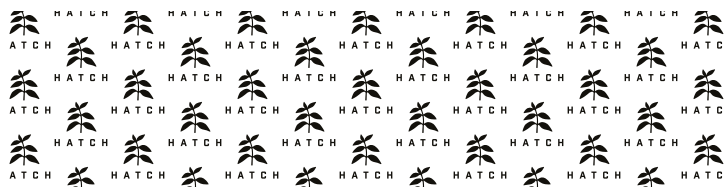
Manager Martin Byrne



**28 Glasthule Road,
Glasthule, Co. Dublin.**

info@quinnsfuneralhome.ie

www.quinnsfuneralhome.ie



**YOUR SUPPORT
MEANS
EVERYTHING
TO US**

*We're staying open 7 - 6
in Glasthule. We appreciate your
patience as we serve you safely with
less staff working at any one time
as a safety measure.*

*visit HatchCoffee.ie for beans
and brew gear if you can't get to
us... and if you can get to us,
we'll see ya soon.*



EST. 1947

CAVISTONS

FOOD EMPORIUM

A HUGE THANK YOU FOR YOUR
CONTINUED SUPPORT

HERE FOR ALL YOUR SUMMER
DINING NEEDS

THE FRESHEST SEAFOOD, HOUSE
MADE MARINADES, SAUCES & DIPS
SALADS, OOZY CHEESE AND DON'T
FORGET THE ROSÉ

IT'S A SUMMER TO GET OUTDOORS
& ENJOY WITH YOUR CAVISTONS
FAVOURITES

WIDEST SELECTION OF SEAFOOD, DELI ITEMS AND
FRESH PRODUCE AVAILABLE UNDER ONE ROOF.

58/59 Glasthule Road,
Sandycove, Co. Dublin

Shop: 01 280 9120
order by email at orders@cavistons.com

info@cavistons.com
www.cavistons.com

Garda Bike Patrols

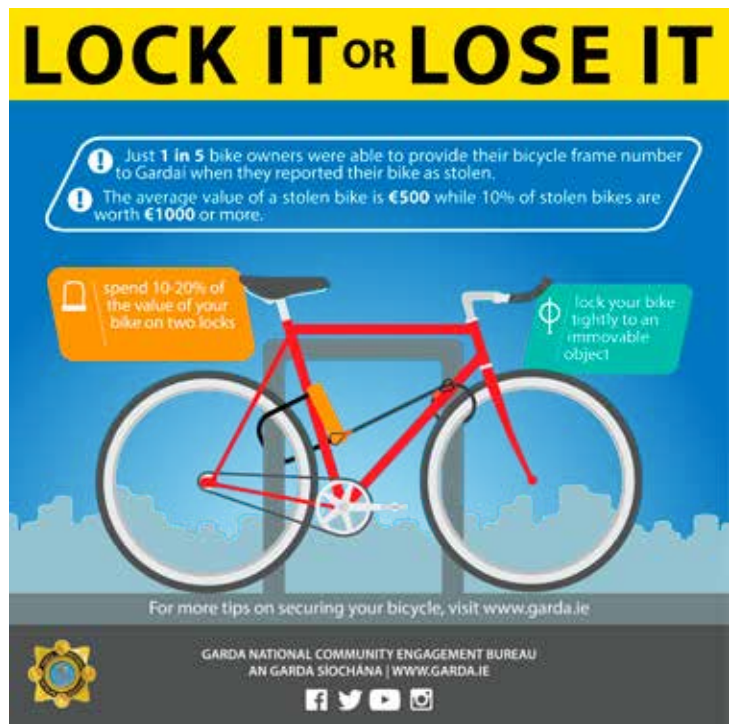
As part of Operation Irene, there will be patrols by a team of Garda on mountain bikes during the summer months. They will patrol the 40 foot, beaches and parks.

The Gardaí have asked the Council to put up notices advising the public that it is illegal to drink in public.

Rubbish

We hope that a solution can be found to this problem.

We acknowledge the recent large wheelie bins and hope that this is a start to improvement.



The Dublin Array Offshore Wind Farm

Note to readers: This article has been provided by Dublin Array. It is published here as an information service for members and should not be read as representing a policy position of SAGRA. SAGRA welcomes reader feedback and is open to publishing contrary views.

The Dublin Array Offshore Wind Farm project (Dublin Array) is a proposed offshore wind farm. The project will generate up to 900 MW of green energy. That is equivalent to the electricity demands of around 840,000 average Irish homes.

Projects such as Dublin Array are vital if Ireland is to address climate change and protect the environment. Depending on the final size of the project, Dublin Array will displace fossil fuel generation which could create between 1m and over 1.5m tonnes of CO₂ per annum.

The project will be comprised of between 45 and 61 turbines. These turbines will have a maximum tower height of 135 metres and a maximum tip height of approximately 310 metres. They will be located around 10km offshore.

Approximately 700 people will be employed during the construction phase with an estimated 100 permanent jobs being created during the operational phase. There will also be significant opportunities for marine enterprises to support the development and operation of the project, as well as indirect job and business opportunities such as, for example, boat tours to the wind farm.

Under the expected terms of the Renewable Energy Support Scheme, local communities will benefit from a substantial community benefit fund. More details of this will be announced by Government in the coming months.

At present, environmental assessments are being

carried out in relation to the project. Once these are complete they, along with the feedback from consultations, will inform the final project design. A planning application, including an Environmental Impact Assessment Report, is hoped to be submitted later in the year.

The Dublin Array project is committed to engaging and developed a project specific information and engagement platform for the Dublin Array Autumn 2020 consultation which you may have taken part in. All the information presented in the Autumn 2020 consultation is now available on the project website www.dublinarray.com, which is regularly updated and will include details of future consultation events when these are available.

Dublin Array has a full time Community Liaison Officer, Eda Martin, who can be contacted by phone or email and is happy to meet with any members of the community at any time.

Dublin Array will be carrying out a second round of public consultation later this year and will be advertising details in local papers and on the project website, as well as sending notifications to local community groups via the Public Participation Networks and to anyone who has subscribed for project updates via the project website.

Dublin Array want people to have the facts and to provide their feedback so that it can be incorporated into their project plans. If anyone has any questions about the proposal they are encouraged to contact the project.

www.dublinarray.com
dublinarray@rwe.com
01 902 0317



Parking Nightmare at Sandycove Point

A message from **SANDYCOVE AVENUES & LANES NORTH EAST & WEST**

As so many of you may be aware, there have been significant changes to our area in recent months. Many of you are probably very excited with these changes. Sandycove and the Forty Foot became very popular, with more people than ever taking to the water, which is a fantastic amenity and it is so lovely to see so many people enjoying this facility.

Most of us should be happy with these changes, but unfortunately the consequences for the residents living in the enclave of Sandycove Avenue West, East and North and the avenues and laneways within have been a complete and continuous nightmare over the past twelve months.

SAL NEW Residents Association was formed in February 2021. We are a representative association for the residents of the small geographical area we refer to broadly as Sandycove Point comprising Sandycove Point, Sandycove Avenues North, East and West, Mornington Avenue, Sandycove East Lane, Sandycove Close, Rock Yard Lane and Sandycove North Lane.

DLRCC implemented changes during, and as a result of, the COVID-19 pandemic to accommodate the immediate demands and ease pressure on particular areas of attraction.

Forty five carparking spaces were removed on all roads that lead to and from Sandycove and the Forty Foot, increasing the number of cars that are now illegally parked, usually blocking not only residents' gateways, but more alarmingly, parked precariously, being a potential risk in restricting the access of large emergency service vehicles, such as ambulances and fire engines, and worryingly increasing emergency response times to this busy area.

Our purpose is:

To act as a focus group to identify, articulate and assist in resolving problems of access and parking arising in our immediate area as a direct result of the recent changes – both infrastructural and behavioural.



The unhealthy mix of vehicles spewing out CO2 over a small beach full of families with toddlers would not be tolerated in any other EU country

To this purpose we will:

- Engage with all those who live in the geographical area who experience the impact of the changes in their daily lives.
- Engage with the representatives of DLRCC, both technical and administrative, who are tasked with looking after the development and management of the area.
- Seek support from public representatives, both local and national.
- Liaise with the local residents association for the wider area, Sandycove and Glasthule Residents Association.
- Disband the group as soon as its purpose has been achieved, ideally within one calendar year of inception.
- Continue to advocate on other identified topics put on the table, through the auspices of SAGRA.

We collectively feel that the Council are very interested and understanding of our collective concerns. We expect in the coming weeks proposals from the Council that may mitigate some of the issues. The group really appreciates the effort that the Council is making on our behalf.



Sandycove Avenue West is frequently blocked right back to junction even at dusk



The south end of Sandycove Avenue East allows parking on both sides often creating a pinch point which blocks progress of large vehicles.

THE EXCLUSIVE INTERVIEW

‘This Covid will be the death of me’ moaned the old masked man.

Mr Reaper (for it was he) put down the scythe he had been carefully sharpening, giving it a kiss of affection.

‘Good Scythe’ he said, as if talking to a child, ‘you’ve worked your butt off this past year. Me too’, he added wearily.

He removed his mask. I removed myself back a bit. He seemed a bit ... viral.

He lit up a Benson & Hedges, drawing deeply on his King-Size. He didn’t breathe out smoke; he coughed it out, along with gobbets of stuff. I was glad I’d turned down his earlier offer to ‘sit up by the fire, the cold outside would kill you’.

He was dead right about the cold. A neon sign outside Glennon’s Pharmacy had told of a temperature of 2 degrees. Sandycove & Glasthule Folk were queueing to pick up their medications. I mentioned that they had appeared scared-grey whereas normally our elder seaside suburbanites looked the picture of health.

‘More easy pickings for me’ he commented, ‘variants will beat the vaccines any-day’.

He coughed again.

‘Damn fags; they’ll be death of me. You don’t smoke do you?’

I nodded in the negative. He obviously had a thing about death.

Casement Statue Unveiled



An Cathaoirleach, DLRCC, Úna Power unveiling the statue.

Ulysses by James Joyce, with its opening scene set on the James Joyce tower in Sandycove, was published on 22nd February 1922. So 2/2/22 marks its 100th anniversary. Keep an eye on www.joycetower.ie for news.

2/2/22

‘Good girl; I wouldn’t want you joining me on a permanent basis’.

He gave me a knowing wink. I felt uneasy. He settled comfortably.

‘Now, what was it you wanted to ask me about?’

I reached for my notebook. This was the Big One. The Breakthrough Interview. An exclusive scoop that would go viral, maybe even get me a job on the Irish Times, my very own byline; like Miriam Lord or Roisin Ingle. Or, deep breath, a TV Show, like Claire Byrne. Wow.

THE EXCLUSIVE INTERVIEW by Sarah-Mary Burns. I could see it in my mind’s eye. In Big Bold Type, with a picture of me. I would be a journalist, a real one who other journalists called on for quotes. I leant in to ask Killer Question No 1.

‘Mr Reaper’, I said; invitingly, eager to win his confidence.

Too invitingly perhaps. He immediately moved to sit beside me.

‘Call me Grim’, he smiled.

I felt a shiver run through me.



Breandan O’Broin

1 November 2020

The statue commemorates Roger Casement who was born in Sandycove in 1864 and who was executed for his part in the 1916 Rising.

The statue was commissioned by Dún Laoghaire-Rathdown County Council and was created by sculptor Mark Richards following an open competition.

It is a representational bronze, standing over 3m tall. It will eventually be sited at the end of the new jetty at the Dún Laoghaire Baths project which is currently under construction.

St Joseph’s Online

St Joseph’s Glasthule has subscribed to the online streaming service provided by churchservices.tv. This enables viewers to see funerals, weddings, baptisms, Mass etc.

www.churchservices.tv/glasthule

Friendly Reminder

You can pay your membership subscription online at www.sagra.ie

€15 for individual or €22 for a household.



NAOMI'S KITCHEN AT HOME

DELICIOUS HANDMADE FOOD BOXES NOW
AVAILABLE FOR DELIVERY & COLLECTION
OUR FOOD | THE LARDER | GIFTS & WELLBEING
CHECK OUT OUR NEW ONLINE STORE
WWW.NAOMISKITCHEN.IE



01 444 2841 hello@naomiskitchen.ie



www.naomiskitchen.ie [@naomiskitchenevents](https://www.facebook.com/naomiskitchenevents)



DURING COVID 19 FRENCH LESSONS ON ZOOM WITH A NATIVE SPEAKER

Conversing is definitely the best way to "refresh your French", improve your pronunciation, expand your vocabulary, learn the correct grammar & enjoy the beauty of the language!

Conversation classes in Glashule. All levels welcome!
One-on-one & mini-groups of 4 students max (per level)
Afternoon classes for children from 4th to 6th class
Oral, aural & written grinds for Junior & Leaving Certificates
Exam preparation for college students
Adult & Business classes in the mornings & evenings

Call Anne Gélinau-Mc Laughlin at 087 2812 665
Email: frenchannemcLaughlin@gmail.com
Info & testimonials: www.facebook.com/FrenchAnneClasses



BLOOMINGDALE'S FLORIST

Ph: 01-2850100

Offering a large inventory of fresh flowers daily
& Bespoke Floral Designs

- Flowers for all Occasions
- Plants/Fruit & Gourmet Baskets
- Sympathy Tributes
- Corporate & Event Planning
- Weddings

www.bloomingdalesflorist.ie

Order online - We Deliver



49A, Sandycove Road, Sandycove, Co Dublin.
email: info@bloomingdalesflorist.ie



SERVICES

- HOUSEHOLD FURNISHINGS
- WEDDING DRESS SPECIALISTS
- SPECIAL CARE
- REPAIRS AND ALTERATIONS
- BED LINEN LAUNDERED TO HOTEL FINISH



GLASHULE 012301120
GREYSTONES 01 2877390
WICKLOW 0404 62446



We offer a free collection and delivery service.
We launder all types of duvets, pillows, bedspreads, blankets etc.
Call us today: Billy 087 253 1976, David 086 371 5906

SHOP ONLINE

We continue to provide Art Consultancy
Services (online/virtual or in person) | Viewing
by Private Appointment | Virtual Viewing on
request | Gift Vouchers | Exhibitions

ENQUIRE NOW



Forty Foot - Stephanie Sloan

Coming soon: Online viewing rooms

WILTON GALLERY

+353 89 410 7007 | info@wiltongallery.ie
55 Glashule Road, Sandycove, Co Dublin - A96 T2K3



EAMONN'S BOOKSHOP

Serving the people of Sandycove since 1973

We buy and sell all kinds of books, records, dvds and cds

Large range of greeting cards and stationery

Photocopying service available

Open Tuesday - Saturday, 10:00 -17:30

(01) 284 2144 eamonnsbookshop@gmail.com



Glasthule

Society of St Vincent de Paul

The Conference is appealing to your generosity to fund the Society's work and assist local people in need. Contributions can be made as follows :

1. Donate by cheque, made payable to :
'St. Joseph's SVP Conference.' posted to
SVP Glasthule, Parish Centre,
Summerhill Rd, Dublin A96W 6D6

2. Electronic funds transfer to:
St Joseph's Conference of SVP
IBAN IE 16 BOFI 9011 1688 646489
BIC: BOFIE2D

If you need help or advice in any way - or would like us to visit you - perhaps you might be lonely - then please contact us in strict confidence by e-mail (anytime) info.east@svp.ie or call **01- 855 0022** Monday to Friday, 9-5



Custom Birthday Cakes

We now sell
Frozen Pizza Dough.
Take out, defrost covered, it will grow in size, just roll out and enjoy your Pizza.
€1.50 each or 5 for €5.

Coming very soon...



Yummy Doughnuts

Opening 7 days a week:
Mon-Sat 8am - 6pm
Sun and Bank Holidays 9am-4pm.

01-2802571, BakerStreetDublin@gmail.com. Facebook: BakerStreetBakery



MITCHELL'S
WINE, SPIRIT & CRAFT BEER SHOP
GLASTHULE VILLAGE

.....
for all your
SUMMER
NEEDS
.....

HUGE SELECTION OF WINES
FROM ALL OVER THE WORLD
GIFT SETS
WHISKIES & SPIRITS
RIEDEL GLASSWARE
CRAFT BEERS

Telephone: - - **01 230 2301**

Emails : **glasthule@mitchellandson.com**

SHOP ONLINE
www.mitchellandson.com

DELIVERY NATIONWIDE
CLICK & COLLECT AVAILABLE

KENDUF MOTORS

- **SERVICE ALL MAKES OF CARS**
- **REPAIRS**
- **NCT PRE-TEST**
- **BODY REPAIR & SPRAY PAINTING**
- **CRASH REPAIRS**

We can deal with your
INSURANCE CLAIMS and
provide a FREE ESTIMATE

Talk to
Jamie Kennedy
086 2600 224

Talk to
Mark Duffy
086 2600 048



26A Albert Road Lower,
Sandycove, Co. Dublin, A96 X5D8
Tel (01) 236 0608
www.kendufmotors.ie

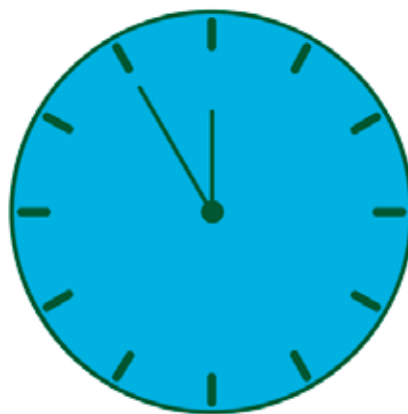
USE A SPF ON EXPOSED SKIN 365 DAYS OF THE YEAR TO PROTECT AGAINST UV DAMAGE. A LOT OF DAMAGE IS DONE BY THE TIME WE GET TO 10/15 YEARS OF AGE. OVER A LIFETIME, REPEATED EPISODES OF SUNBURN AND UNPROTECTED SUN EXPOSURE CAN INCREASE A PERSON'S RISK OF MALIGNANT MELANOMA AND OTHER FORMS OF SKIN CANCER. AS A RULE, IF YOU HAVE FAIR SKIN AND LIGHT EYES, YOU ARE AT GREATER RISK OF SUN-RELATED SKIN DAMAGE AND SKIN CANCERS. THIS IS BECAUSE YOUR SKIN CONTAINS LESS OF A DARK PIGMENT CALLED MELANIN, WHICH HELPS TO PROTECT THE SKIN FROM THE EFFECTS OF UV RADIATION.



SHOP NOW

www.nualawoulfe.ie
01-2300255

Time to Move?



Tom
O'Higgins
ESTATE AGENT

Your Local Estate Agent
in Sandycove & Glasthule

52 Sandycove Road Sandycove Co. Dublin
Tel: 01 284 5007 Email: info@tomohiggins.ie Web: tomohiggins.ie

Layout, photography & design: Liam Madden, ElmSoft, www.elm.ie

