

# Sandycove and Glasthule Residents Association Newsletter



[www.sandycoveandglasthule.ie](http://www.sandycoveandglasthule.ie)

April 2007

[info@sandycoveandglasthule.ie](mailto:info@sandycoveandglasthule.ie)

Circulation 2,500

Sandycove and Glasthule Residents Association is thriving and active in the Sandycove and Glasthule area. The main object of the Association is to promote the best interests of the residents of the area. We regularly publish this newsletter, which is distributed to 2,500 households in the area. The printing of this newsletter is paid for by members' subscriptions. If you are a member, thank you. If you are not already a member, please consider joining. An application form is enclosed with this newsletter.

## GENERAL ELECTION ISSUE

### WHAT THE CANDIDATES SAY ABOUT LOCAL ISSUES

#### GENERAL ELECTION CANDIDATES What they told us

A General Election is approaching. There is considerable interest among residents as to where candidates stand on important issues affecting our locality. As a service to residents and as a contribution to promoting public interest and participation in issues affecting the area, we decided to address questions to each of the potential TD candidates who have made themselves known to us. These questions were set out in a questionnaire. We asked each candidate to respond so that we might publish a report on the responses in our next newsletter. We said it would be helpful if responses were short and to the point. See inside this extended General Election issue for what they told us. As at the time of going to press no other candidates had made themselves known to us.

We received responses from  
(in alphabetical order):

Barry Andrews, Fianna Fail

John Bailey, Fine Gael

Sean Barrett, Fine Gael

Richard Boyd Barrett,  
People Before Profit Alliance

Ciaran Cuffe, Green Party

Eamonn Gilmore, Labour

Mary Hanafin, Fianna Fail

Fiona O'Malley, PD

Oisín Quinn, Labour

Eugene Regan, Fine Gael

## ANNUAL GENERAL MEETING

Date Thursday 26th April 2007  
Time 8 pm  
Venue Presentation College, Glasthule

If there are any topics you wish to be discussed at the AGM please tell us by emailing [info@sandycoveandglasthule.ie](mailto:info@sandycoveandglasthule.ie) or writing to The Secretary, Sandycove and Glasthule Residents Association, c/o Mount Carmel, Sandycove Road

(entrance to the left of Presentation College opposite St Josephs Church)

As well as the usual formal business of the AGM this will be an opportunity for residents to hear about the latest developments in the area, to ask questions and to express their opinions

## ALL MEMBERS AND PROSPECTIVE MEMBERS FROM SANDYCOVE AND GLASTHULE ARE WELCOME

**GARDEN AWARDS** Some green fingered gardeners will be the recipients for their endeavours at the AGM

# URSULA'S BITS AND PIECES

We like the cover picture of the People's Park in the March-April issue of DLR Times. This is a great focal point as one comes into the Sandycove and Glasthule area.

John Kane, who grew up in Sandycove, is now Irish Consul in Bermuda. He established the World Rugby Classic in Bermuda and undertook major fundraising for charity there. He was awarded an MBE in 2006 for his services to golf and rugby. Congratulations John.

Glasthule Buildings won a Community Project Award in the Environmental Section sponsored by Dun Laoghaire Rathdown County Council. Well done.

Jimmy Rock would be known to many who visit the People's Park. He retired recently. We wish him many happy days, pursuing his pastimes.

Well done to those who braved the weather by participating in the Forty Foot Christmas Day swim. We pay tribute to all who supported the fundraisers. This time, €16,000 went to St. Luke's hospital.

Boys and girls from Harold School received their awards recently as the under 11 Cumann Na mBunocoil (South Division) winning team. Well done.

We hear Newtownsmith is included in a Dun Laoghaire Rathdown County Council 2007 major programme for the installation of a pedestrian crossing.

Congratulations to Nuala Moisselle. She won the Irish Film and Television Award for lifetime contribution to the industry.

For the Irish Rugby Teams' recent Six Nation successes we congratulate the full backs, who are local boys: Girvan Dempsey on the Senior Team (Triple Crown Winners) and Felix Jones on the Under 20 Team (Under 20 Grand Slam Winners).

Another local sports success, Neil O'Hagan, sailing sportsman, received an Anglo Irish Sports Scholarship at a special awards ceremony at the National College of Ireland.

Centra, Glasthule, recently won the National Hygiene Award for the best store in small retail category. We congratulate Louise and her staff.

We welcome Marie Cawley, the new Parish Secretary at St. Joseph's.

Congratulations to Emily Kerr, Katie Lenehan and Jesse McCormick, first-year students at Loretto Abbey, Dalkey, on winning the County Final - Junior Section in the 2006/2007 Dun Laoghaire Rathdown County Council Student Enterprise Awards. These girls live in the Sandycove and Glasthule area. They now qualify to compete in the National Finals. We wish them every success.

## October 2006 Residents Gathering

On 19th October 2006 a successful residents' gathering, attended by over 70 residents, was held. Everyone was thanked for their attendance.

Our Chairperson Ursula Maguire updated us on planning developments, including the proposed pastoral centre, which is supported by the Association.

She reported that the Association is represented by Bob Waddell at every meeting of the County Council and committee member David O'Neill represents the Association on the County Forum and one of its sub-committees.

Ursula thanked the 40 volunteers who deliver the newsletter. 2,500 newsletters are delivered and more volunteers are needed. Ideas for future issues of the newsletter are welcome. John Elliot and Bob Waddell were thanked for their work on the newsletter.

She also congratulated Glasthule Buildings on the recent Tidy Towns award which they had received.

Our guest speaker for the evening was Imogen Stuart, the international artist and esteemed member of our community, who spoke about her 60 years of sculpture. Bob Waddell gave the vote of thanks for the very well received illustrated talk showing her sculptures, many of which we know very well in places near where we live. An entertaining question-and-answer session with Imogen Stuart followed.

The meeting was attended by Fiona O'Malley TD and Councillors Jane Dillon Byrne and Mary Mitchell O'Connor. Minister Mary Hanafin sent a message to the meeting and apologies were received from other Councillors.

There then followed discussions on local issues including blockages in drains, the barrier to be installed at Eden Park, the number 8 bus, the high-speed ferry to Holyhead, the rejection of the St Brendan's planning application, the difficult junction to Barnhill, and parking at Newtownsmith and Adelaide Road. A wide-ranging and lively debate on the problems of traffic and parking in the area developed and it was definitely clear at the end of evening that traffic and parking are very big issues among residents.

## APRIL IS NATIONAL SPRING CLEANING MONTH

Sandycove and Glasthule residents are encouraged to join with the Tidy Towns Group for CLEAN BEACHES DAY. This takes place on Saturday 21<sup>st</sup> April. All meet at 11 a.m. in the park at the Old Sandycove Baths. If you have any handy implements i.e., brushes, bring them along. You might also consider getting together with your neighbours for an hour or two during the month to tidy up your own road. The Tidy Towns inspectors will be noting any houses which let down the area.

# GENERAL ELECTION 2007

## This is what the Dun Laoghaire candidates told us

We asked all the General Election candidates for the Dun Laoghaire constituency who have made themselves known to us a series of questions on important local issues: traffic, health, crime, planning, green space, litter, public toilets and Dun Laoghaire Baths. Over the next 8 pages we publish their answers: in effect their manifestos for Sandycove and Glasthule on the issues which keep coming up time and time again at residents' meetings. These answers are an important record and, as you would expect, we will be following very carefully the actions and statements of all successful candidates in the months and years after the General Election.

TRAFFIC	Traffic
	Do you support the implementation of an overall traffic plan from Killiney to Monkstown? Are you in favour of car clamping?
ANDREWS	Traffic is a major problem throughout Dublin with 170,000 new cars purchased last year alone. Clearly we need to integrate DART with buses. This goes without saying. We also have to take whatever steps are necessary to plan for anticipated future development
BAILEY	Yes, I support the implementation of an overall traffic plan from Killiney to Monkstown, provided we talk to all the people in the areas for their views. Plus no changes at Dart for parking. No, I am not in favour of car clamping.
BARRETT	Yes, I support the implementation of an overall traffic plan from Killiney to Monkstown. No, I am not in favour of car clamping. There are plenty of penalties available.
BOYD BARRETT	Yes, there needs to be a comprehensive traffic management plan for the greater Dun Laoghaire area. This needs to be based on real consultation with the local communities instead of being dreamed-up by over-paid consultants sitting in an office. I am opposed to the introduction of clamping. It is purely a money-making racket that will discourage people from coming to the area. We need better public transport to reduce car-use and free park and ride facilities. Some residential areas that are too congested should have residents only parking.
CUFFE	Yes, we need a traffic plan for the entire area. I'm not in favour of clamping, but the County Manager needs to get the court times to tackle recidivist parking offenders. We should also consider reducing parking fees, as they are acting as a disincentive to shoppers.
GILMORE	I do not believe it is possible to design a single traffic plan for Killiney and Monkstown, because the traffic conditions and road space and configurations are quite different in areas between these two points. Let us start by doing the long promised traffic plan for Dun Laoghaire — and then work incrementally outwards. I am opposed to car clamping in Dun Laoghaire. I believe it will drive business out of the town.
HANAFIN	The extension of the DART, the improvements to stations and platforms, the introductions of the QBCs, the purchasing of new buses, and an integrated system, will all help to improve public transport in the area.
O'MALLEY	Yes, I do support the implementation of a traffic plan from Killiney to Monkstown. I think traffic plans must be coordinated and integrated so as to work effectively. Traffic in an expanding city must be planned for. I am not in favour of clamping and have strongly opposed the planned introduction of clamping in Dun Laoghaire town centre. I have asked the Minister for Justice to request a special sitting of the District Court to clear the backlog of parking related cases and believe that this will obviate any need for clamping.
QUINN	Ensuring that Dublin Bus, Iarnrod Eireann and the Dun Laoghaire Rathdown County Council fully co-ordinate and work together is the key to improving our public transport and reducing traffic. Presently they are all doing their own thing with occasional co-ordination. We need integrated ticketing; a local feeder bus service (like the City Imp); a proper park-and-ride strategy at Dart Stations; more Dart capacity by reducing the gaps in service (some caused by CIE running a main-line service straight through to Connolly) and more buses with real-time displays at bus stops. Secondly, Dun Laoghaire itself needs a new traffic plan. In addition, there may be specific individual changes that could be made to traffic flows in the Killiney/Monkstown stretch that could also be made straight away. A major review of the traffic in that stretch must be based on a commitment to implement an integrated scheme of public transport improvements and a new plan for Dun Laoghaire as these changes will inevitably have a knock on effect on the wider traffic patterns.
REGAN	There's no question that we need an overall traffic plan for the area and that is currently being worked on by the Council. We would hope to deal with this issue on the final views of recommendations of the consultants engaged to carry out this work in the coming weeks. In relation to clamping there is car clamping Dublin City style, which is the exclusive means of enforcing the parking by laws including Pay & Display and then there is Dun Laoghaire Rathdown style, which is a default mechanism to enforce payment of unpaid parking fines. That is cars are clamped when that car has been the subject of a minimum of three parking fines and offences once again. On a proposal which I put before the Council at the February meeting, this is a matter which has been put back until 1 <sup>st</sup> June. Before that date I would like to see an additional report from the County Manager on the outcome of his consultations with the business community in relation to car clamping Dun Laoghaire style and also a report on how the Council is processing the prosecution of parking fines through the Courts. Subject to those reports I believe that most Councillors would at the end of the day favour the Dun Laoghaire Rathdown style clamping proposed by the County Manager.

<b>HEALTH</b>	<b>St Michael's Hospital and St Colmcille's Hospital</b>  Where do you stand in relation to St Michael's Hospital in Dun Laoghaire and St Colmcille's Hospital in Loughlinstown?  Do you believe that these hospitals should be retained?  Do you believe these hospitals should receive adequate funding for the future and be recipients of modern technology?
<b>ANDREWS</b>	I support the continuing upgrade of the two hospitals. I am delighted that St Colmcille's has made improvements for the second round of the hygiene audit. There is definitely more room for improvement.
<b>BAILEY</b>	Yes - these hospitals should be retained. Yes - these hospitals should receive adequate funding for the future and be recipients of modern technology.
<b>BARRETT</b>	I have always supported both hospitals. Yes - these hospitals should be retained. Yes - these hospitals should receive adequate funding for the future and be recipients of modern technology.
<b>BOYD BARRETT</b>	We have been campaigning for some time for a paediatric A&E unit at St Columcille's and calling for the hospital to be upgraded to full regional status with all the services. It is ridiculous that Dun Laoghaire and all of Wicklow have to go all the way to overcrowded hospitals in the City, Tallaght or Crumlin for many services. We also need to restore a 24-hour A&E service at St Michael's. We should be upgrading services and increasing capacity at local hospitals not cutting them. I am also totally opposed to giving over public hospital land to private for profit hospitals, as this government is suggesting. This country spends one of the lowest proportions of national wealth on health services in Europe. That's why there is a crisis in our hospitals and we have problems like MRSA. We need a major increase in funding for our hospitals.
<b>CUFFE</b>	I want to see both hospitals improved so that they can be centres of excellence in healthcare for the County. I want to see maternity services returned to St Colmcille's as it is difficult for expectant mothers from Dun Laoghaire and as far south as Gorey to battle rush-hour traffic on the drive into Holles Street. That will require significant investment in new technology. We need a network of modern medical centres around the County, at around 1 for every 100,000 people that would house GPs, a geriatrician, paediatrician and provide services that would deal with people's everyday health needs, from applying a dressing to dealing with simple fractures.
<b>GILMORE</b>	Both of these hospitals should be retained and upgraded. I reject the recommendation in the Hanly Report that these hospitals should be "local" hospitals, subsidiary to St Vincents. The Labour Party has committed to increasing by 2,300 the number of public hospital beds, and we envisage that many of these additional beds will be provided in St Michael's and in Loughlinstown. Labour believes that Loughlinstown should be re-developed as a General Hospital to serve South Dublin and Wicklow and North Wexford.
<b>HANAFIN</b>	St Michael's and St Colmcille's Hospital Loughlinstown play a key role in the provision of quality healthcare in the area. Just last year, St Colmcille's hospital received almost €5million in Government funding (for upgrading St Ann's ward, for A&E improvements, Obesity clinic, etc), while St Michael's Hospital also received substantial Government funding last year. In partnership with St Vincent's Hospital, they will continue to be supported to meet the needs of the local population.
<b>O'MALLEY</b>	Both hospitals' infrastructures are critical elements in the health care infrastructure of the area. Of course, these hospitals should be retained and enhanced even. More recently, service provided at St Michaels has been enhanced.
<b>QUINN</b>	Both of these hospitals need new strategic plans to ensure their viability in the future. I believe they should both be retained and their roles enhanced. Labour is committed to providing 2,300 extra beds and both of these hospitals will get extra beds if Labour is in Government.
<b>REGAN</b>	These hospitals are fundamental to the health service in this area and fully support their retention within the hospital structure. Accordingly, yes, that these hospitals should be retained. Yes, these hospitals should receive adequate funding for the future and the necessary investment to ensure they can avail of the latest technology medical knowhow and best practices.

## Dun Laoghaire to lose Stena ferry service

We were shocked to read in our national newspapers that there is a possibility that Stena might be leaving Dun Laoghaire. Stena employs over 80 people and establishes Dun Laoghaire as the tourist gateway to Ireland. The loss of Stena would be an extremely serious blow to Dun Laoghaire. Various bits of information which emerged are that Dun Laoghaire apparently charges four times as much to Stena as they would have to pay if they moved to Dublin. Stena have a number of years left in their contract and therefore according to some Councillors cannot move. No smoke without fire. We feel this is an area we will hear an awful lot more about in the months to come, no doubt.



<b>CRIME</b>	<b>Policing of the Area</b>  What will you do to ensure that the increase in unsocial behaviour, including graffiti, which takes place along our seafront and indeed on the roads and laneways of the area is monitored and curtailed?
ANDREWS	The Gardai have done excellent work in monitoring anti-social behaviour on the seafront. CCTV has been installed and is an effective weapon in the continuing fight against crime.
BAILEY	Extra funding to Council.
BARRETT	Fine Gael in Government will increase Garda manpower to 15,000 and release 500 Gardai from behind their desks and put them back on the beat.
BOYD BARRETT	For years the Council has been steadily reducing the number of full-time outdoor council staff to do cleaning, repairs and maintenance work. They have handed over much of this work to private contractors. This ends up more expensive for the taxpayer, the work takes longer to get done or is just not done at all. We need more outdoor Council workers employed to look after our areas and keep them clean. Young people have huge amounts of energy, which they are going to use up one way or the other. They end up hanging around the streets because we not giving them decent public amenities and youth and sports clubs, with equipment and resources. We need to provide amenities and facilities for our young people.
CUFFE	I want to see more police patrolling of the area and more Gardai on mountain bikes, particularly in the summer months. DIY shops should operate a responsible sales policy to stop paint being sold to those who wish to vandalise our streets. There has been a terrible rise of graffiti, particularly on stone and brick buildings that never had this before. The community need to have greater access to funding to remove graffiti, and we need a 24 hour call-out for a contractor that can carry out a clean-up. Of course we also need more amenities for our young people, such as a modern baths, but that's another story!
GILMORE	One of the Labour Party Leader's five commitments is "To ensure that there are more Gardai on the beat in neighbourhoods. Hard working families are entitled to live in peaceful law-abiding communities. I am convinced that changes in the manning, development and organisation of the Garda Siochana would have a hugely positive impact on the quality of life and on the rates of crime and anti-social behaviour" (Pat Rabbitte TD, Labour Party Leader). The implementation of this commitment should address these problems.
HANAFIN	The Gardai do tremendous work in the area, and the level of crime has substantially reduced. The increased numbers of Gardai are due to increase by a further 2,000 over the term of the next Government. There is currently a pilot project on cleaning graffiti. If successful, we will ensure it is extended. CCTV is a useful tool in combating crime, as is the valuable work of the community Gardai.
O'MALLEY	The introduction of ABSOs, increase in both the numbers and visibility of the Gardai Siochana and the creation of the Garda Reserve Force, will in time all contribute greatly to curtailing this problem. As your local TD I will continue to lobby on your behalf for a fully developed Garda Reserve Force here in the Dun Laoghaire constituency and for more CCTV cameras in our locality. Graffiti is a growing problem in the area. The community, with the help and support of the County Council, acting swiftly when it appears will hopefully lead to its eradication.
QUINN	I have proposed a six-point plan to tackle graffiti, using European best practice. Gardai must treat it seriously. The Council must have a proper, resourced and efficient system for the quick removal of graffiti. The public must have access to a 24-hour hotline to report graffiti. Offenders should be involved in the removal process. Anti-social behaviour in the first instance should be tackled by community Gardai. One of our core commitments in Government is to increase the number of community Gardai – who should be on the beat or on mountain bikes – not just in cars.
REGAN	In relation to anti social behaviour including graffiti, I have proposed that the establishment of a community policing committee pursuant to the Garda Siochana Act 2005. I believe that Councillors, the local community and the community police officers working together can deal with the issue of anti social behaviour more effectively. In relation to graffiti this Council increased the allocation in the Budget tenfold to €100,000 and hopefully we can now have an effective graffiti removal service which is efficient, cost effective and prompt. I also support the use of Anti Social Behaviour Orders (ASBOS) to curtail this type of behaviour.

# To Be Or Not To Be Clamped

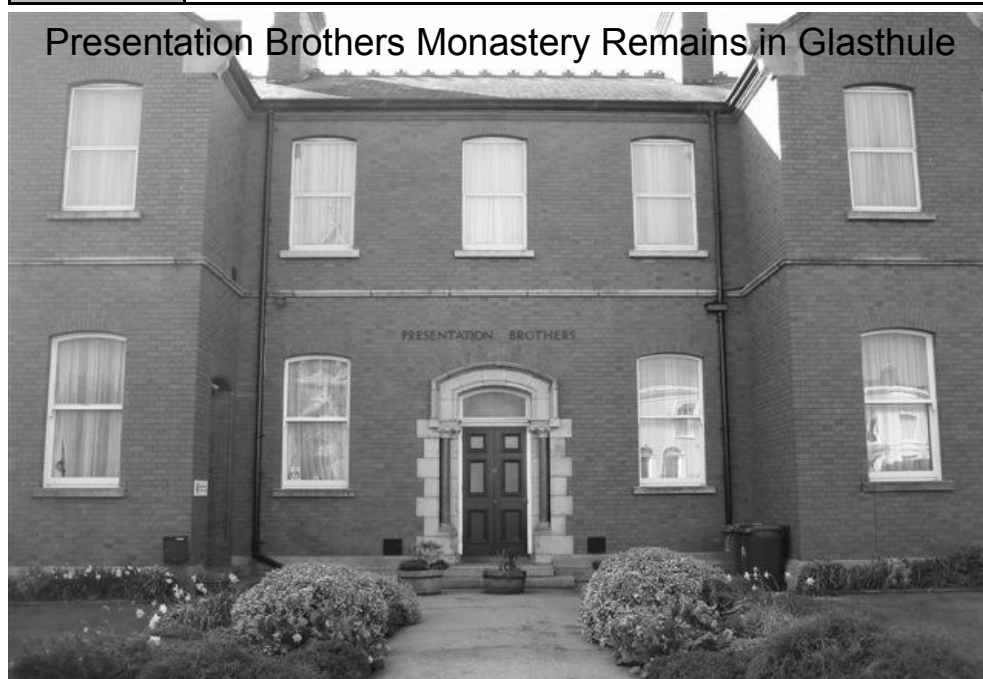
For some months now there has been a lot of activity in the Council Chambers and the County Council offices in relation to the proposed clamping in the Dun Laoghaire area. This has turned out to be very controversial with some Councillors voting for and some against. Likewise, with the members of the public we have talked to, there is a difference in attitude. There are those who say that parked cars which sit illegally on double yellow lines and taking up half the footpath, thus obstructing wheelchairs and prams, deserve to be clamped. Those who feel that in clamping a car you are taking away one's basic rights and freedom of movement and indeed by clamping, exacerbating the obstruction. All of us are aware of the gridlock and the parking problems of this area, the difficulty of people to access main-street shops etc, but your Committee still maintains their demand for an overall traffic plan for the area which would embody creating parking



areas, facilitating park 'n' ride on the DART and buses etc, facilitating residents and the ease of granting planning permission to those who wish to open up their front gardens. It is a complex issue but tardiness of Councillors and the County Council officials to come up with some plan is indeed exasperating. We understand that clamping will be introduced and only applied to those members of the public who have not paid previous fines! Apparently out

of thousands who've been fined for road misdemeanours in the past many have not paid. As reported in the national press, disagreements took place between the County Manager and the Courts in this respect and the County Manager subsequently had to apologise for the fact that it was the County Council who were to blame having only processed a very small number of cases for the Courts having previously stated that the Courts were not giving sufficient time to this issue.

<b>PLANNING</b>	<b>Planning</b>  What will you do to ensure that Sandycove and Glasthule maintain their village character and ensure that the planning which flies in the face of local opinion is prevented?
ANDREWS	I have made various proposals for improvements to planning. Local opinion isn't the only factor that determines whether a proposal is acceptable or not. Vigilance is the key to ensuring that planning is integral to development and that we don't get the latter without the former.
BAILEY	Take power away from Manager.
BARRETT	I will support the residents to ensure their village retains its character and oppose anything that runs contrary to this aim.
BOYD BARRETT	We need to impose strict planning and development controls on the height and scale of buildings in Sandycove, Glasthule and across the county generally, to ensure that all development is sensitive to the unique character and heritage of the area. We need local area plans for each area that are based on a full public participation and consultation process, not the sham or non-existent public consultation process we have currently. All major developments should be stopped until this is put in place. Regular local public forums should also be held to discuss planning and development and to allow the public to interrogate council officials and public representatives on the issues.
CUFFE	As an architect and town planner I have watched with horror some of the more recent developments in the County. It is crucial that the character of the area is protected, and a general 3 storey limit to development is appropriate. We also need to ensure that homes are not overlooked or overshadowed by infill development. I do accept that infill development will occur, particularly as we are close to the DART line, but we have to put manners on the excessive proposals that we have witnessed in recent times.
GILMORE	As the Labour Party Spokesperson on the Environment I have already proposed a reform of our Planning System, in order to restore the rights of local communities, and to ensure good, sustainable planning and development. I will pursue those reforms, if in Government. I will of course, continue to work with your own Association and with local residents to protect the village character of Sandycove and Glasthule.
HANAFIN	I will continue to work with the local community to ensure that unsuitable planning applications are brought to attention, and objected to.
O'MALLEY	I will continue to fight on behalf of the communities of Sandycove and Glasthule on this important issue. We live in one of the nicest parts of Dublin and I do not want to see our local villages lose their charm. I will continue to lobby Dun Laoghaire County Council and the County Manager to ensure this does not happen. Inappropriate high rise development will spoil the village character. I will continue to oppose such high rise developments in the area.
QUINN	Planning and development must be part of an accountable and responsive system of local government. The current system is developer driven and lacks real accountability with residents and local communities invariably being put on the back foot. I have experienced all this as a member of Dublin City Council and despite fighting hard to successfully change the Dublin City Development plan (to ensure that green spaces were protected and community lands could only be developed as part of local area plans passed by the elected councillors following full public consultation with the local community) we must change our system of planning and development. I want a new system of local government where the elected representatives lead a transparent process of making village/local area development plans into which all future development applications must fit. This is the best way to ensure that development is sensitive, community lead, accountable and ensures real community gain such as enhanced public spaces, green spaces, short-term on-street parking, a proper mix of retail and residential units that also cater for families and empty-nesters looking to trade down and stay local (not just small apartments aimed at investors) all of which is sensitive to the character and heritage of the local area.
REGAN	Planning is an executive function and not a function of Councillors. In relation to Sandycove/Glasthule I have vigorously opposed the developments at the corner of Adelaide Road/Hudson Road and was successful. I believe the planners are sensitive to preserving the village character of Sandycove and Glasthule but they do need to be reminded by Councillors of that on every occasion. It is very important that the conservation areas set out in the County Development Plan are completed and, to the extent that parts of Sandycove and Glasthule constitute in architectural area, I would hope that this is work that would be carried out shortly. This gives added protection to the Council under the planning laws. I raised the issue of the architectural conservation areas and sought a commitment from the County Manager that the designation would be completed within the framework of the current development plan, that is by 2010.



The people of Dun Laoghaire, Sandycove and Glasthule will be delighted that the Presentation Brothers will stay in the community using the well known red brick building as their monastery and educational office and that part of the school buildings have been acquired for a special school for clients of Carmona Services. We must acknowledge the hard work put in by all those who achieved this result. The area—and far beyond—owe a debt of gratitude to the Brothers and lay teachers who for many years provided quality education to the community.

<b>GREEN SPACE</b>	<p><b>Grounds on Hudson Road</b></p> <p>Where do you stand in relation to the grounds on Hudson Road?</p> <p>Will you ensure that the Hudson Road grounds are not given over to private development but used as sporting and recreational facilities for the area?</p>
ANDREWS	I support the retention of our green spaces - where they are privately owned, the key question is zoning.
BAILEY	Yes, I will ensure that the Hudson Road grounds are not given over to private development but used as sporting and recreational facilities for the area.
BARRETT	I hope they are retained for recreational purposes. I will oppose the rezoning of these lands for housing purposes.
BOYD BARRETT	There should be no question of allowing private development on the sports grounds at Hudson Road. This is one of the few remaining green spaces in the area. It must be retained as an amenity space.
CUFFE	I don't want to see the loss of any further green space near the heart of Dun Laoghaire. I want to protect the green space zoning of the lands. I will do my best to prevent the lands from being lost to developers.
GILMORE	I am somewhat surprised that action has not already been taken by the Department of Education to secure both the buildings and grounds for future educational use. I do not believe that these grounds should be handed over for private development, but should be retained for educational and/or recreational use.
HANAFIN	It is important to preserve as much green space in the area as possible. The best way to ensure this in relation to privately owned land is to ensure that neither the zoning nor planning permission lends itself to development.
O'MALLEY	These should be retained as a public recreation facility. Certainly, the schools and sporting groups need them badly.
QUINN	I am totally committed to retaining these important sporting and recreational grounds. We must enhance and protect our green spaces and sports grounds to cater for the additional families that will live in the new houses being built in the area. Exercise, sport and green spaces are vital to our quality of life.
REGAN	The grounds on Hudson Road should be retained for the benefit of the local community. I would not support these grounds being given over to private development and they should be used as sporting and/or recreational facilities for the local community. I am committed to the current zoning of these lands as green space.

## Sandycove to Sutton cycle-path

In the back half of last year, following a press release which showed Minister Dick Roche and the Taoiseach Bertie Ahern announcing the launch of the Sandycove to Sutton cycle / walkway (this has been mooted for quite a number of years), we wrote to Minister Roche with copies to the Taoiseach and Minister Hanafin. Within one week the Taoiseach and Minister Hanafin's offices responded saying they noted our letter pointing out that Minister Roche was the person responsible. In the letter we simply asked when would this development commence and of course we would be interested in what it might cost, what would this development specifically be used for and would it have any effect on land adjacent to the development. Here in Sandycove and Glasthule we should be particularly conscious of the fact that the "old metals" which form the bulk of the development cuts right through our area from the back of the People's Park up to Glenageary. Minister Roche's response, which came slightly later, indicated that we would be responded to in due course. To date we have received absolutely nothing and must ask with all due respect: is this the way to respond to a serious organisation representing some two and a half thousand residences from a Minister who is responsible for this scheme? We eagerly await an answer.

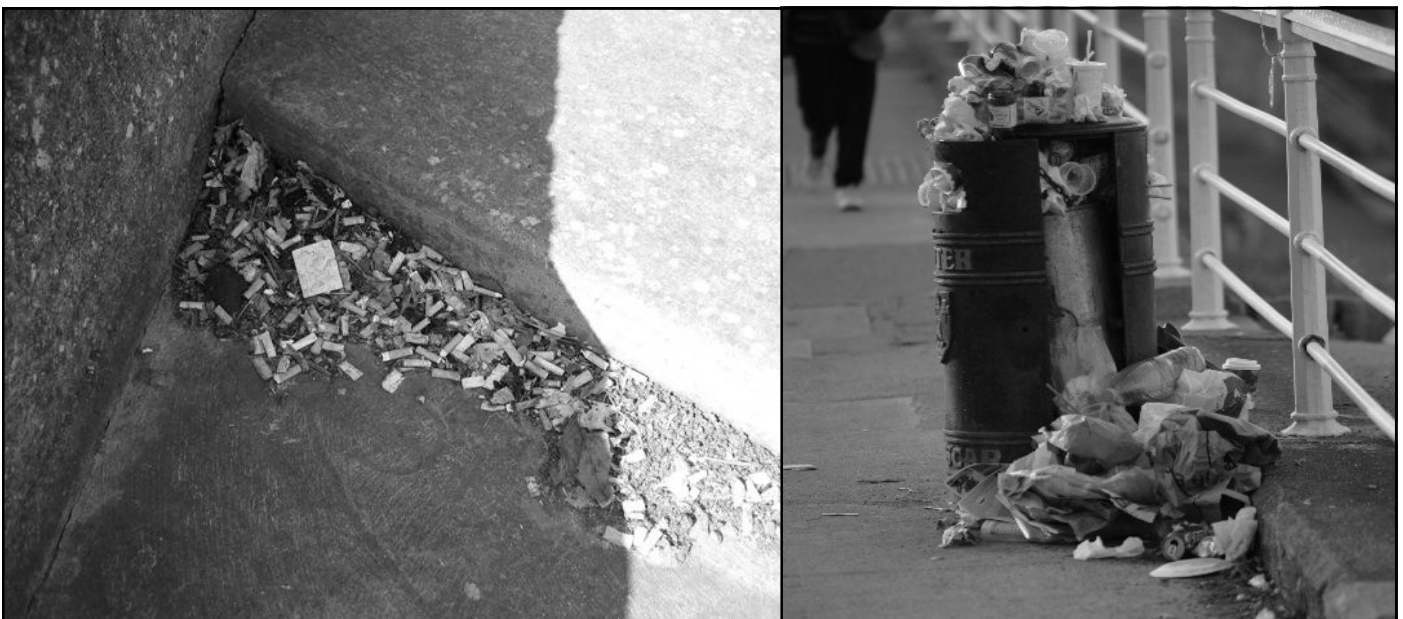




<b>LITTER</b>	<b>Litter</b>  What would you do to counteract the litter problems, particularly during the summer months in the area, some of it due to infrequent collection of rubbish and the non-availability of waste bins at key places?
ANDREWS	The Gardai have been supportive of the association in its endeavours under the heading of litter and the tidy towns committee has done excellent work. I think it would be a case of more of the same.
BAILEY	More collections. More bins. More funding.
BARRETT	Press to have more fines imposed on those responsible for causing these problems and also for regular collections and provision of additional bins.
BOYD BARRETT	The provision of many more litter bins and the employment of more council workers in the cleansing department is the only way to deal with the litter problem. The Council are pinching on waste bins because they are obsessed with making money from waste disposal. Their philosophy now is if we can't make money on something we won't provide it. That's why we don't have enough litterbins.
CUFFE	We need to increase the collection frequency, particularly on warmer summer days. More bins would help, and a freephone number would be useful so that we could report bins that are over-flowing to the litter wardens.
GILMORE	The Council is failing in its responsibility to maintain public areas, free of litter and graffiti. The litter and illegal dumping problem has worsened since Refuse Charges were introduced. I will work to ensure that the Council fulfils its responsibility and, if in Government, I hope that Labour will legislate to strengthen the litter laws and to make enforcement more effective.
HANAFIN	Litter is a problem that is being combated through education in schools (through involvement in the 'Green Schools' project) and, of course, every individual is personally responsible for their own litter. The Tidy Towns committees deserve particular credit for their efforts and successes.
O'MALLEY	I have no tolerance whatsoever for litter. Strong enforcement is vital. Clearly more facilities are needed. Whether they be litter bins or bring banks, our County Council should be facilitating and encouraging responsible citizenship. I have always taken a strong line against littering and indeed illegal dumping, and would be in favour of tougher penalties. Dog fouling is a scourge, thankfully people are more responsible nowadays and it has become socially less acceptable. Pity this has not yet extended to littering.
QUINN	This is a major problem, particularly around the seafront. More wardens, more bins and more regular emptying of bins is required. Casual traders must be licensed and should make a contribution to the extra cost of cleaning associated with the discarding of wrappers etc.
REGAN	I proposed in relation to road sweeping that the Council would publish on its website the road sweeping programme. This would allow us to determine whether the road sweeping programme is adequate and would also allow monitoring of the work which is supposed to be done. There is no question but efficiencies must be secured in the road sweeping programme and as a Councillor I have continuously highlighted this issue and urged the County Manager to improve the system. In the 2007 budget we have allocated an extra €250,000 for street cleaning and litter removal at weekends, which should be of benefit to Sandycove/Glathule. The issue of the adequacy of waste bins has been raised in the Council and is to be addressed by the Manager.

# Growing litter problem

Is it our imagination or has the amount of litter increased in the Sandycove and Glathule and Dun Laoghaire main street areas? Perhaps it has been the amount of gusting winds we've had over the last two months which distributes a variety of items of litter from the centre of Dun Laoghaire down towards Glathule and Sandycove! One particular area which has been noted by people is the entrances to the office complexes between Clarinda Park and Corrig Avenue once known as the Adelphi cinema site. If this be the case it is particularly ironic since we have the Dun Laoghaire Rathdown County Council stating that "you are now entering a litter free zone"! We are sure that the commercial businesses, local private residences and tourists are not impressed.





<b>PUBLIC TOILETS</b>	<b>Public Convenience Availability</b>
	Apart from the People's Park which opens during certain hours and the single toilet at Sandycove, there are no public toilets in the area and that goes for most of Dun Laoghaire. What will you do to change this situation?
ANDREWS	It seems amazing that public conveniences cannot be supported in an area of such obvious tourist potential. I will call upon the County Manager to consider options for locating a public convenience in the context of developments between the east pier and Sandycove.
BAILEY	Public toilets for pier and at baths.
BARRETT	Dun Laoghaire Rathdown Council must deal with this as a matter of urgency as there are no excuses for not providing additional facilities in key locations. I will press for this to happen.
BOYD BARRETT	The lack of public toilets on the seafront and in the greater Dun Laoghaire area is a disgrace. It is particularly hard for the elderly or families with young children that want to enjoy the seafront or just walk about town. Once again, this is because the council refuses to employ sufficient staff to supervise and maintain these facilities. The Council must be forced to provide such essential facilities and employ the staff to maintain them.
CUFFE	I believe we need an automatic toilet similar to the Sandycove Avenue one at Bulloch Harbour, Newtownsmith and the East Pier.
GILMORE	I have already raised this issue with both Dun Laoghaire Rathdown County Council and the Dun Laoghaire Harbour Company. I will continue my efforts to ensure that there is adequate availability of and access to public conveniences.
HANAFIN	Public conveniences have, in the past, been a health and safety risk. The Council must consider them in the context of overall developments in the area.
O'MALLEY	This is a very difficult problem to find the right balance. Toilets have been closed because of anti-social behaviour and for safety reasons. This cannot be ignored. When toilets become "no go" areas and only attract illegal behaviour they are unusable anyway. The type of facility like the one beside where I live in Sandycove, while frequently out-of-use, I believe is the answer.
QUINN	One toilet at Sandycove is totally insufficient. The Pier at Dun Laoghaire and the coast are fantastic local amenities for people. Huge numbers of people, often families with young children, also enjoy days out at the 40ft and at the sandy harbour at Sandycove in particular. From a public hygiene perspective additional toilets (at least one of which should have proper baby changing facilities) must be provided at these locations.
REGAN	There is a problem of operating traditional public convenience such as that on the East Pier which was the source of not only anti social behaviour but criminal behaviour. In relation to Sandycove/Glasthule no one has suggested or made representations to me that there is a need for any specific additional Public Convenience Facilities in the area. Certainly there is a need for public convenience, near the coastline in Dun Laoghaire.

# Where's that bus?



We again appeal to Bus Eireann to please provide timetables at the bus stops throughout the area. So many times tourists, and indeed local people, standing at the bus stops ask residents what time is the next bus. Even if the timetable stated that there were buses every half-hour or on the hour or whatever, simply stating the time the bus leaves the terminal is of no value because very few people know exactly where the terminal is, especially tourists.

<b>DUN LAOGHAIRE BATHS</b>	<p><b>Dun Laoghaire Baths Site</b></p> <p>Where exactly do you stand in relation to the latest proposals on Dun Laoghaire Baths put forward by the six local Ward Councillors?</p> <p>Are you totally against private development on this site?</p> <p>Are you totally against high-rise development on this site?</p> <p>If you are elected and your party is in power, will your party ensure the necessary funding for the latest proposals?</p>
<b>ANDREWS</b>	<p>A group has been commissioned to provide a feasibility study for the area between the east pier and Sandycove to include the Baths. I would be delighted if a proposal could be feasible excluding a private or commercial element - if that is not possible I would not be automatically opposed to it. I would have to look at it and assess it on its merits. I am against high-rise at the site of the Baths. I worked on the Council to ensure that the local authority had full title to the site and since election to the Dail I have campaigned for funding through the National Development Plan under the headings of heritage, tourism and sport. I will continue to campaign for public funding for the site.</p>
<b>BAILEY</b>	<p>Yes - totally against private development on this site.</p> <p>Yes - totally against high-rise development on this site.</p> <p>Yes - if I am elected and my party is in power, my party will ensure the necessary funding for the latest proposals.</p>
<b>BARRETT</b>	<p>I support the proposals.</p> <p>Yes - totally against private development on this site.</p> <p>Yes - totally against high-rise development on this site.</p> <p>I will do my best to get the necessary funding as quickly as possible.</p>
<b>BOYD BARRETT</b>	<p>The proposals put forward by the ward councillors are in fact the proposals put together in the Save Our Seafront petition, which was signed by over 14,000 local residents. So it is a victory for people power and the thousands that joined our protests that the councillors have finally agreed to our demands for the restoration of the Baths as a purely public swimming amenity.</p> <p>As a founding member and the chairperson of Save Our Seafront, I have campaigned for many years now against any privatised development of the Baths site or indeed any other part of the public seafront. Dun Laoghaire and Blackrock baths, the Carlisle Pier, Dun Laoghaire Harbour and the seafront, generally, belong to the people and must only be developed as fully public amenities. High-rise apartments, offices or hotels are totally unacceptable on the public seafront.</p> <p>Whether I am elected or not, as chairperson of Save Our Seafront I will continue the fight to secure government and council funding to restore the baths until we get it. The government can well afford to fund the restoration of the baths and other public amenities on the seafront. If I was elected it would, however, send a clear message to any government that the money for the Baths must be delivered and that privatisation of the seafront is not acceptable.</p>
<b>CUFFE</b>	<p>I would much rather that the Council had proceeded sooner with a proposal for a modest development/refurbishment of the Baths site incorporating a heated pool, children's pool and small cafe on the site, rather than setting up yet another committee to investigate the issue. Given that the Committee has now appointed consultants to investigate the issue, it may well be years before we see any significant progress on the site. My colleague Councillor Kealin Ireland has requested the County Manager to move the issue along more quickly, and has supported the residents all the way through this campaign.</p> <p>I don't believe that the site should be privately developed, but I wouldn't object to a cafe being leased by the Council to someone who has the appropriate experience. I am against high-rise development on the site. It would be dishonest of me to commit myself or my party to funding prior to a government being formed. However I will do my utmost to ensure funding for the Baths site, if re-elected.</p>
<b>GILMORE</b>	<p>I support the proposals. I am opposed to private or high rise development on the site. If I am re-elected, and part of the next Government, I will personally work to ensure that a financial package is put together to enable the public re-development of Dun Laoghaire Baths. Dun Laoghaire Baths have been derelict for far too long, and I will make it my personal mission, if in Government, to champion the redevelopment of Dun Laoghaire Baths, as a public amenity.</p>
<b>HANAFIN</b>	<p>In relation to Dun Laoghaire baths, I am anxious to see a proposal which is in keeping with the area. I am completely against high-rise on this site. The Government has allocated €295 million nationally this year for sport, and it is our intention to introduce a new swimming pool development fund. Dun Laoghaire Rathdown County Council would, of course, be eligible to apply for funding under these schemes.</p>
<b>O'MALLEY</b>	<p>I welcome the report of the local councillors which place very strict conditions on the development of the site. The site is not suitable for high use and residential units. The unique architectural and maritime context of this site demands a sensitive response. The new guidelines/conditions attaching to this site will protect the site from overdevelopment. I welcome the fact that any development is to include a 25m swimming pool. Monies to develop this site will primarily be sourced from the local authority and this is as it should be. However given the nature of the coastal protection measures which are likely to be required, I have no doubt but that central government funds will be available to underpin any development.</p>
<b>QUINN</b>	<p>I am in favour of the proposals. I am not totally against some private development but I am strongly opposed to any high-rise development on the site. I am personally committed to doing all I can to ensure that funding is made available for this project. If I am elected and if Labour is in Government I am committed to ensuring that the necessary finance is put in place.</p>
<b>REGAN</b>	<p>As one of the six local ward Councillors who participated in the sub committee I fully endorse the proposals. It follows therefore that I am totally against private development of this site. Also I am totally against high rise developments on this site.</p> <p>Not if elected but as Councillor and Cathaoirleach of the Council I have played my part in ensuring that funding will be available for the redevelopment or I should say improvement of the Bath site and indeed the entire coast line. I proposed that funds would be made available from the Council's development levy scheme when that scheme would be reviewed mid term through the development plan. The latest proposals in relation to the development levy scheme is that such funds would be available. I would also anticipate that central Government funds will be made available in connection with the part of the project dealing with Sutton to Sandycove cycleway and walkway. If elected to the Dail, I would be fully committed to ensuring that necessary funding is available from central Government to assist in the completion of the improvement scheme for the entire stretch of coastline from the East Pier to Sandycove Green, which is now the subject of an international tender, the international consultancy firm having been recently appointed to examine the feasibility of different options in consultation with local groups.</p>

We sent a questionnaire to each of the potential TD candidates for the Dun Laoghaire constituency in the forthcoming General Election who have made themselves known to us. The responses received have been published substantially in full, subject only to minimal editing for reasons of space limitations and to ensure that the responses made sense when reproduced in tabular format.

# BUILDING HEIGHT

## EDITED HIGHLIGHTS OF SUBMISSION TO URBAN INITIATIVES ON BEHALF OF DUN LAOGHAIRE RATHDOWN COUNTY COUNCIL BY SANDYCOVE AND GLASTHULE RESIDENTS ASSOCIATION

We wish to express our concern at the uncertain position in relation to possible future developments on the seafront at Sandycove on a scale not in accordance with the scale of most of the existing buildings. In particular, as has been shown by some recent planning applications, there is a risk of building in the future to a height in excess of the established skyline on the seafront. We feel that, due to lack of certainty about the maximum acceptable height on the seafront, there is a constant threat of the possibility of planning decisions being made which will have an irreparably damaging effect on the character of the area.

We believe that, due to the prominence and significance of the appearance of the seafront, both for local residents and as an area of national importance as part of a gateway to Ireland, there is a compelling case to be made for the inclusion in the County Development Plan of a prescribed height restriction for building on the seafront from Dun Laoghaire to Booterstown Harbour. We propose that the restriction should limit such building to a height no higher than the generally existing height of neighbouring historical building stock.

In one recent Planning Application for a site in Glasthule, the proposal was for a 5 storey development. Its neighbouring properties are 2 storey, and single storey. There is an unacceptable mismatch in scale. Indeed to our estimation there (with one notable exception) is no building in excess of 3 storeys, including the commercial areas of Glasthule, Dalkey, and Glenageary for over 1 kilometer in any direction. It is not until the commercial area of Dun Laoghaire, or the Glenageary Roundabout, that this scale is reached. The notable exception is the 5 storey apartment building called Seabank Court, which rather unfortunately intrudes in the Glasthule and seafront streetscapes. This latter illustrates the unfortunate impact of out of scale, high rise development.

There is no doubt whatever that if tall buildings were to be located in any part of either the picturesque high-amenity seafront area of Sandycove, which provides

unrivalled sea level views of Dublin Bay, or the historic village of Glasthule, internationally renowned for its Joycean Bloomsday associations, this would significantly and irrevocably adversely impact the valuable heritage, character, identity and environment of these unique areas. The development of tall buildings in these areas must be firmly resisted.

In recognition of the serious risks posed by the development of tall buildings in these areas, we have previously called on the County Council to include in the County Development Plan a special prohibition (to which no exceptions would be allowed) on buildings of more than 3 storeys high within 1 km of the shore in Sandycove (and indeed along the whole shore from Booterstown to Shankill) and within the generally recognised boundaries of the village of Glasthule (to the extent if any that the 1 km shore prohibition does not apply). The only exception to this would be the central urban area of Dun Laoghaire, where the height established by the existing Buildings in the case of the Pavilion Development and the Marine Hotel, should not be exceeded in any case. It is particularly important here that due consideration is given to the existing residential amenities of properties in the central Dun Laoghaire area, which is vital to preserve a living core and to respect its architectural heritage.

With regard to the lands in to the seaward side of Crofton Road/Queen's road/ Windsor Terrace, in particular the site of the derelict Dun Laoghaire Baths, and the derelict Carlisle Pier, it is vital that high rise be specifically proscribed. This Association points to recent proposals for these sites in particular which were extremely insensitive to context and were unjustifiable to all but the proposers.

Stand alone High Rise buildings in such locations are egocentric and do not contribute to the urban continuum. We note that Dun Laoghaire Rathdown County Council itself objected recently to a 25 storey proposal on its border with the Dublin City Council at Booterstown, and we agree with that view.

There is an appropriate location for tall buildings. Indeed your study will be pre-

empted by several decisions by Dun Laoghaire Rathdown County Council for high rise blocks in the Sandycove Industrial Estate area. It is our opinion that High rise buildings should be grouped in clusters, and not allowed to sporadically proliferate. In this instance High rise development should be confined to the Sandycove area, and all efforts by the council should be made to promote Bus Transportation to supplement the existing Luas, in order to encourage CROSS BOROUGH PUBLIC TRANSPORT. The City is far too reliant on public transport routes radiating from the center of Dublin. It is in the interest of the Borough to overlay an east/west framework.

This site is also beside the M50 Motorway. It cannot be overlooked that the intensification of use and increased density arising from High Rise development creates extreme burdens on road usage. The older roadways in the established areas of the eastern Borough cannot accommodate this. In our Association's area there is extreme congestion as it is, and the Council have failed repeatedly to introduce a Traffic Management Plan.

Lest there be any suggestion, we do not consider Cherrywood to be a suitable location for development higher than at present. Part of the legibility of the local topography is the relationship of the Mountains to the sea. This would be disrupted by placing high buildings on elevated locations such as Cherrywood.

High rise development tends to be a type of 'beach head' development, whereby when such a development occurs, it establishes a precedent for other similar development to follow on. It is vitally important that this does not happen by accident, or by stealth. We are continually having to defend our environment from developers' 'slash and burn' attitude, whereby they wage a campaign of attrition to acquire sites at inflated value, seek to develop unsustainably, and move on to the next.

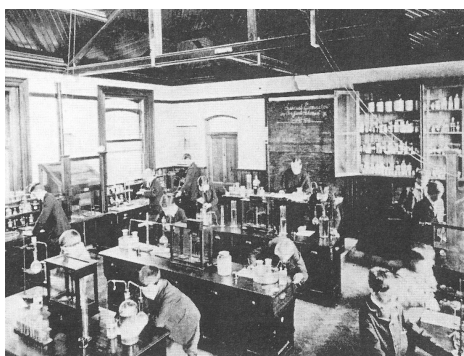
The matter of Planning is one of Appropriateness, and of development in Context, those considerations are as important as the accommodation of growth and progress.

# Closing the Gates

by Jim Murray, Principal,  
Presentation College Glashule

The Presentation Brothers came to Glashule in 1902 at the request of the local parish priest Very Rev. Canon Murray. The Canon wanted the Presentation Brothers to establish a select school for Catholic boys in the Dun Laoghaire district that would provide:

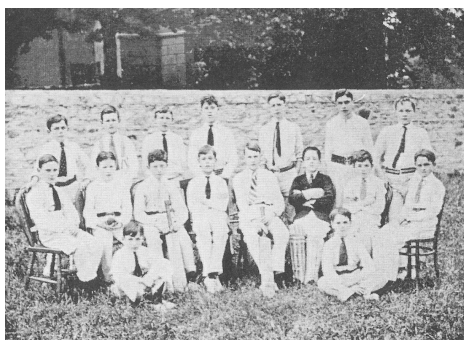
“high class English, Classical, Scientific and Commercial education without removing them from paternal supervision and the refining influence of the home circle”.



Science class 1909

In the following September the school accepted its first students. As well as providing a Catholic education the college prepared young men for careers in commerce, the civil service and the professions. Brother Stanislaus Kenneally was appointed the first Superior. The Presentation Brothers bore the cost of all construction work without any assistance from either the parish or the diocese. The site chosen for the College was opposite St. Joseph's Church on a plot of land that had been used as “a rendezvous for circuses and merry-go-rounds”.

The number of students admitted to the school on the 1st September 1903 was 25. That had grown to 43 by year's end. There is a sad irony in the fact that when the College closes in June 2007 there will be 23 students graduating



Cricket Group 1916



Junior Cup Team 1920-21

from the College. Initially, there were three departments in the College: Juniorate Classical and Civil Service and Commercial. These merged eventually into a Primary and Secondary school. One of the defining characteristics of the school has been its size. It was never a large school. In 1940 the total number of students in the school was 183. In 1971 the number in the Primary had grown to 322 while there were 184 in the Secondary school. Ten years later, in 1981, there were 232 students in the Primary school and 261 in the Secondary school. With declining numbers attending the Primary school in the 1980s the Brothers decided to close it in 1989. In 1991 the Secondary school changed from being a fee-paying school to a voluntary secondary school. Initially, this move gave a boost to the numbers attending the Secondary school but with the growth in economic prosperity numbers began to decline again. The Brothers made the decision to close the school in 2004 a year after the College had celebrated its centenary.

The college was an academic college and has continued to be so throughout its history. It has had many successes over its hundred and four years with a significant number of its students being awarded university scholarships. Within recent times two of its students, Niall Lawton (1991) and Patrick Corry (1995), got First Places in Ireland in the Leaving Certificate in German and Business Organisation respectively. In 2002 one of our Leaving Certificate students, Aindreas Hennessy, won an Entrance Scholarship in Science to UCD. We do not consider our high achievers as the only indicators of our academic success. We are very proud of the fact that many of our students at the lower range of academic ability achieve excellent results in the Junior and Leaving Certificate examinations.

Rugby has been, for most of the college's history, the main sport in the college. Presentation Glashule has always been a relatively small school but in spite of that the school has produced some fine rugby teams. Two former Irish internationals, Tom Grace and Fergus Slattery, were students in Presentation College Glashule. Teams from the College have performed well in both Junior and Senior Leinster Cup competitions, particularly, under the inspired leadership of Br. Ultan Rohan, in the College's Golden Age of the late nineteen seventies and early nineteen eighties. A number of players have represented Leinster on the Leinster Schoolboys' team. In 2002 in response to student preference the college introduced soccer as another option for students. Among our students who have excelled at soccer are Alan O'Brien (recent cap on Irish International Team) and Darren Forsyth (Irish Schoolboys' International Team, UCD Sports Scholarship 2006).

The College was concerned always with the whole development of its students and encouraged involvement in a wide range of areas such as work with the local old folk (St. Vincent de Paul Society), Gaisce Awards, Edmund Rice Awards. One of the highlights of our Transition Year Programme was the work placement that our students had with Carmona Services (Dunmore House) that cares for clients with learning and physical disability. This was part of the Programme since its inception. For this reason, we are delighted that part of the school buildings have been acquired for a special school for clients of Carmona Services.

What has been central to the life of the College is the commitment and dedication of the Presentation Brothers and the lay staff who have served in the school. Among the many Brothers who will be remembered is Br. Vincent O'Keefe. Principal of the College in the '60s and '70s. In 1963 he wrote of Presentation College Glashule:

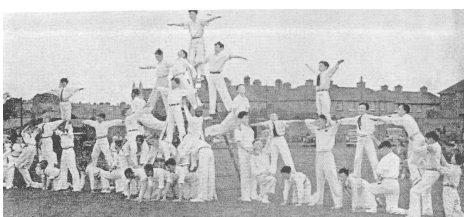
*I must place on record that for frankness, friendship and loyal co-operation, the pupils Past and present of Glashule rank first in my estimation,*



Scannell Cup Winners 1923-24

In 1994 the Trustees appointed the first lay Principal to the school, Mr. Clive Byrne. He was succeeded in 1997 by Mr. Mark Fennell. The current Principal of the College is Mr. Jim Murray and Mr. Jim McNally is Deputy Principal, both are past pupils of the College. It is fitting that in its last year the students of the College are in the care of a long-serving and dedicated staff who are steeped in the ethos and traditions of the College.

The most important people in any school are the students. Presentation College Glashule is a small school that because of its size has a close-knit, familial atmosphere. This is probably the College's greatest strength because out of this atmosphere our students grow in confidence and maturity. We hope, now at the end of its life, that the College will be remembered fondly by all those who were connected with it. We hope that all the students who came through its gates benefited from the care and support provided by the College. We hope that we have enabled the young people in our care to face life with confidence.



Gymnastic Drill Display 1952

Unless expressly attributed, the views expressed in this newsletter are based on editorial decisions broadly reflective of the policies decided by the committee of the Association and should not necessarily be attributed to any individual committee member.